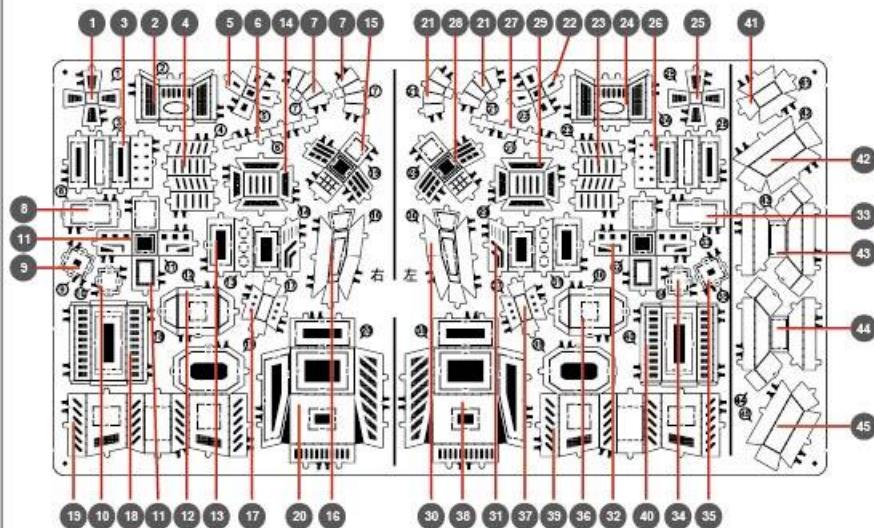
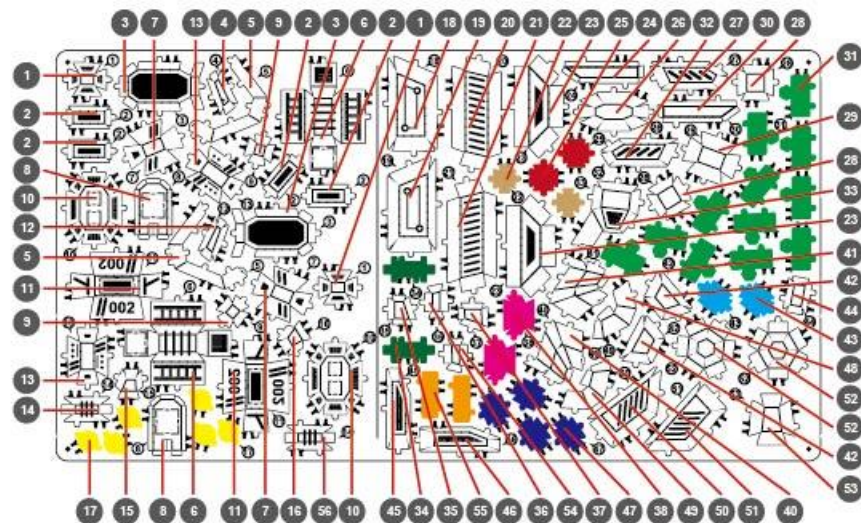


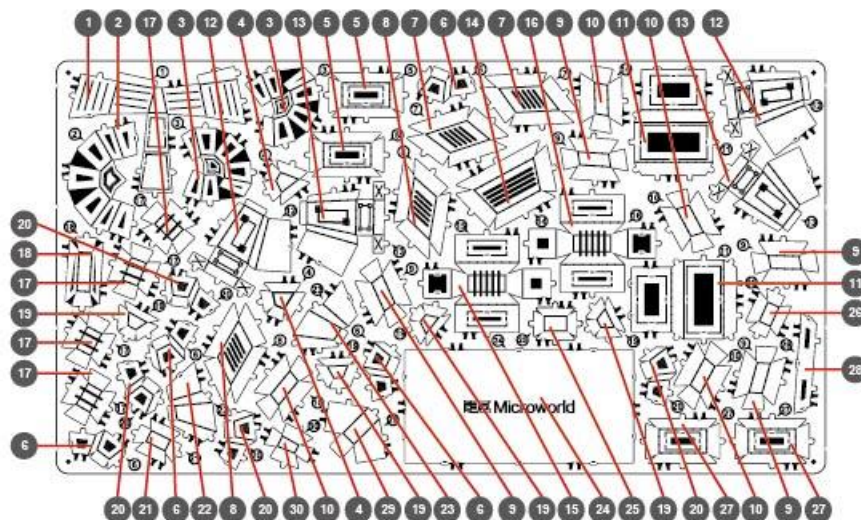
Metal sheet 金属部件 A



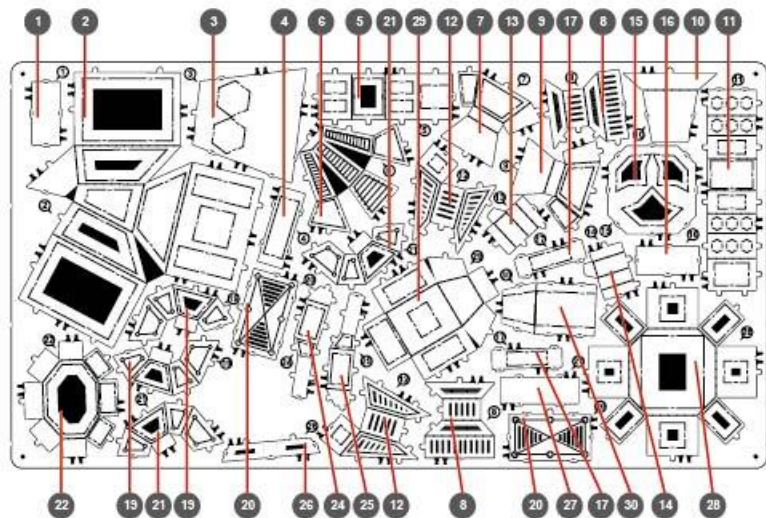
Metal sheet 金属部件 B



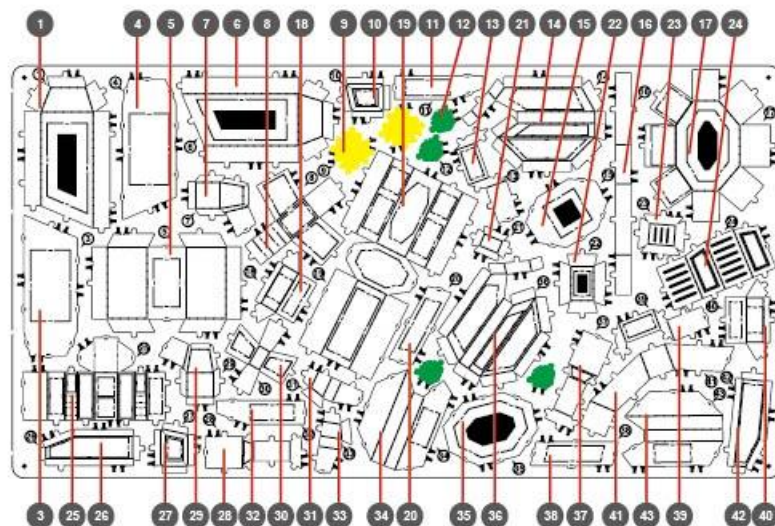
Metal sheet 金属部件 C



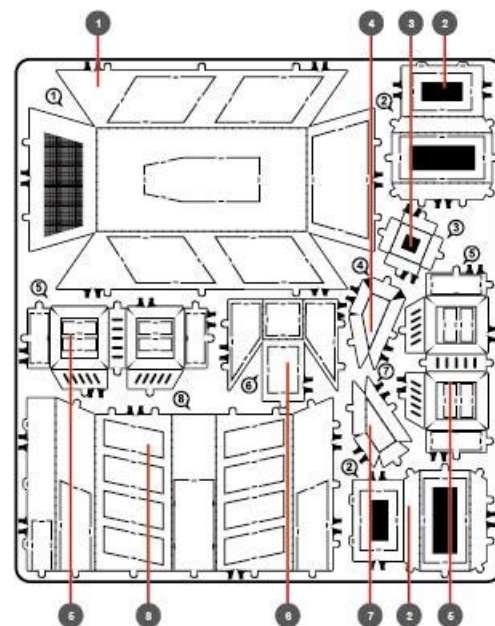
Metal sheet 金属部件 D



Metal sheet 金属部件 E



Metal sheet 金属部件 F



拼前需知: Need to know before

- 准备工具:
- **Spare Tool:**



建议使用本品牌正品拼装工具（水口钳·尖嘴钳），拼装时更省心·省力·拼装后作品更精致·美观！

It is recommended that you use this genuine brand of DIY tool (nozzle nippers & sharp nose pliers) so as to save the labor and resolve the worrisome. It becomes more exquisite and beautiful after being assembled!

- 拼装方法: ● **Assembling method:**

- a. 取下零件
Remove the part



使用水口钳剪断金属零件上的水口，将需要的金属零件从金属片板件取下。

Use the nozzle nipper to cut off the water port on the metal part, remove the metal part required from the metal plate.

- d. 固定零件 Fix the part



- 插入扣孔，平折90°
- Insert tab and bend 90° degrees for most visible areas

- b. 识别零件
Recognize the part



识别金属零件上的扣点，折叠线，扣孔的样子。

Recognize the buckling position, folding line, buckling hole on the metal part.

- c. 折叠零件
Folding part



使用尖嘴钳，参照拼装说明书将金属零件折成形状。

Use the sharp nose plier to fold the metal part into different shapes as per the instruction manual.



- ▲ 插入扣孔，旋转90°
- ▲ Insert tab and bend 90° degrees is best in some areas to ensure a tight connection

- **Precautions:**

纹理面
Texture surface

非纹理面
Non-textured surface

剪金属零件时请剪零件“水口位”，请勿将“扣点”当成“水口位”剪下，每次剪零件时请仅剪当前步骤的零件，切勿一次性将所有零件全部剪下，避免丢失；

Please cut the "water port" of the part when cutting this metal part. Please **DO NOT** cut it by mistakenly taking the "buckling position" as the "water port". Each time when you cut the part, please cut the part for that current step only. Please **DO NOT** cut all the parts in one time so as to avoid missing.

当遇到折叠线的零件，请注意金属片的正反面及拼折方向，请按照说明书说明的方向，轻剪慢折，最好一次折叠完成，请勿反复折叠，避免零件损坏；

When meeting the part of the folding line, please do pay attention to the front and back side of the metal plate and the folding direction, please follow the direction indicated in the instruction manual. Gently cut and fold it. The better you can finish folding in one time. Please **DO NOT** repeat folding it so as to avoid the parts being damaged.

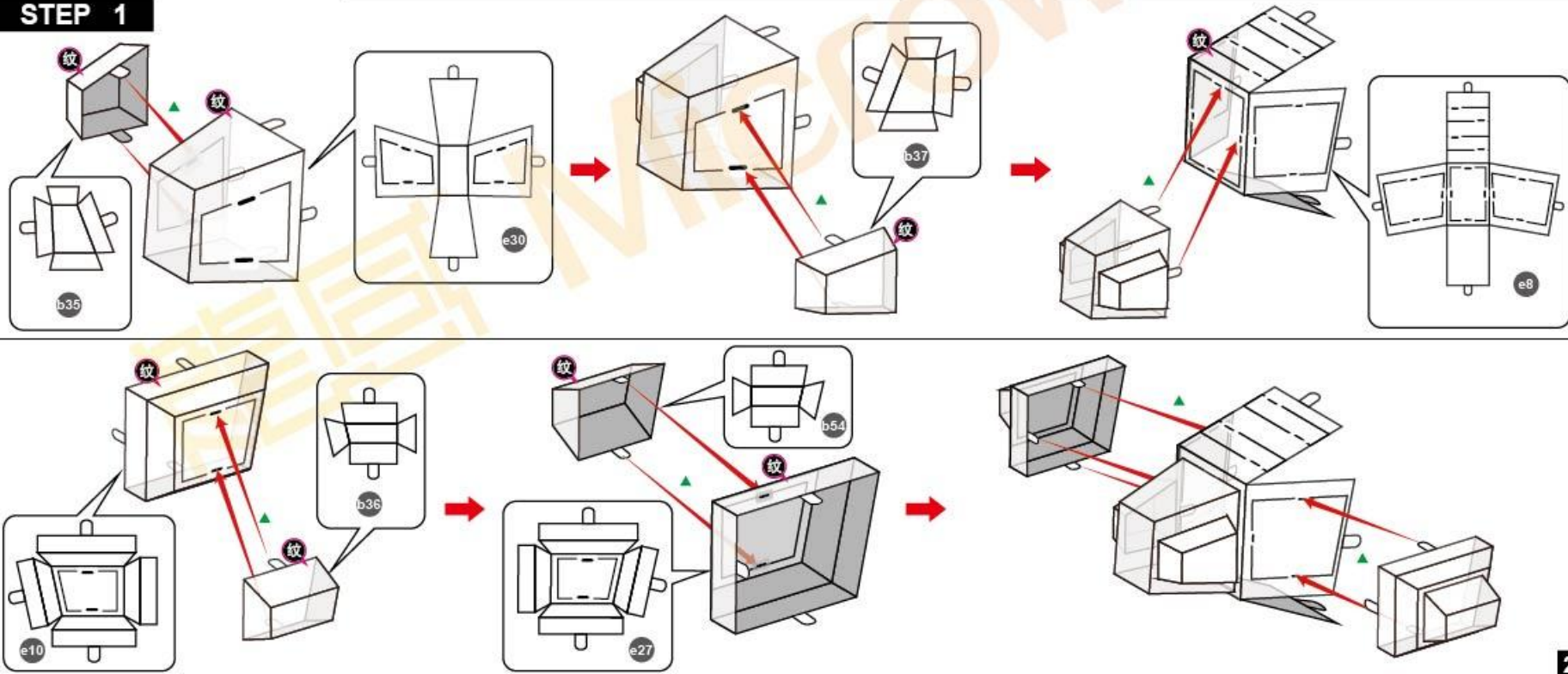


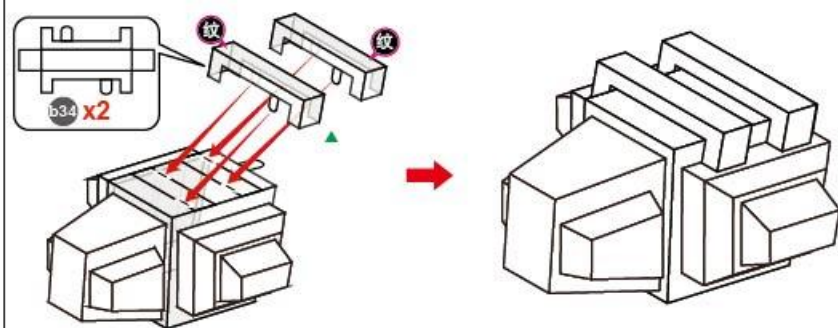
In order to avoid possible injury from sharp edges, please carefully discard the metal sheet after parts have been removed. This product is not a toy. keep out of reach of children.

请小心处理金属边料，以防刮伤

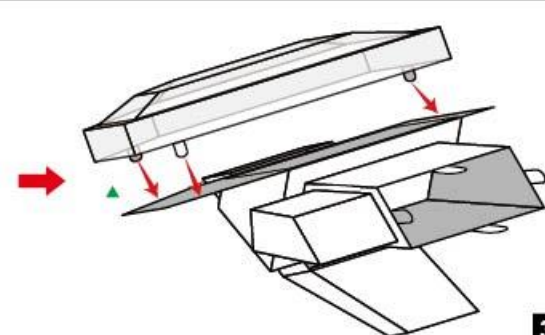
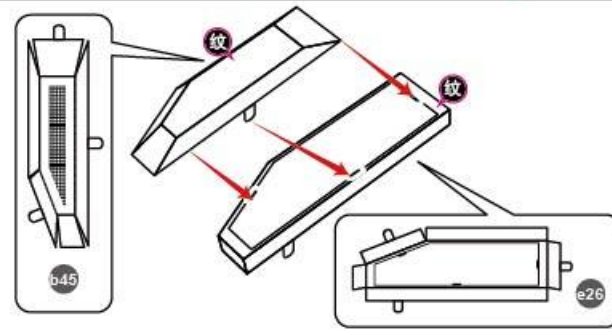
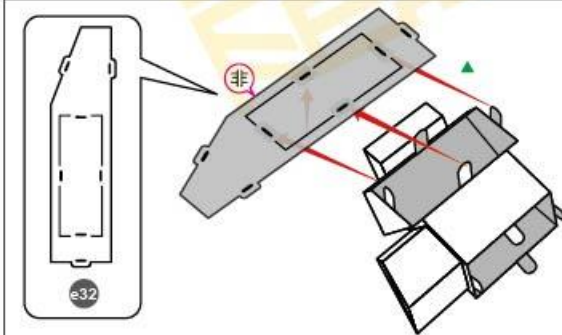
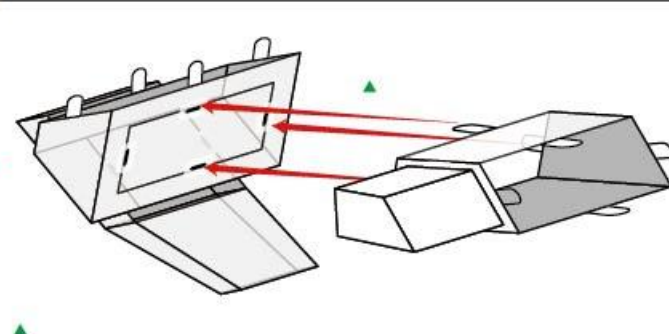
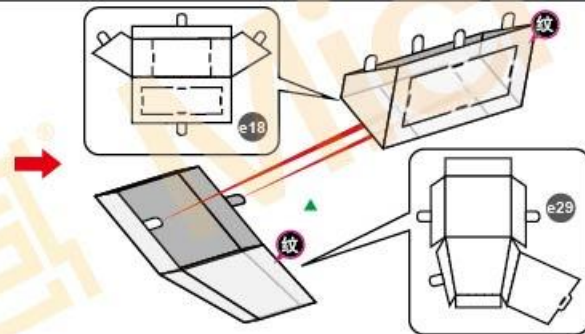
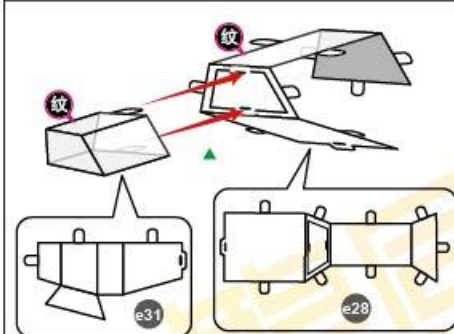
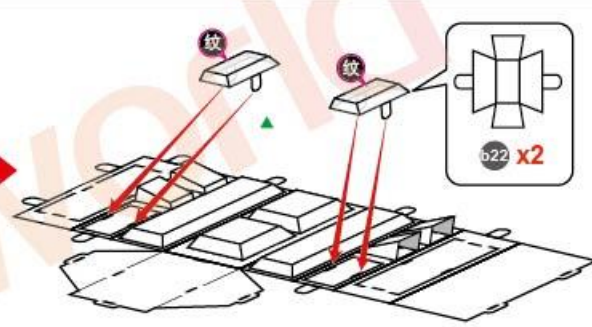
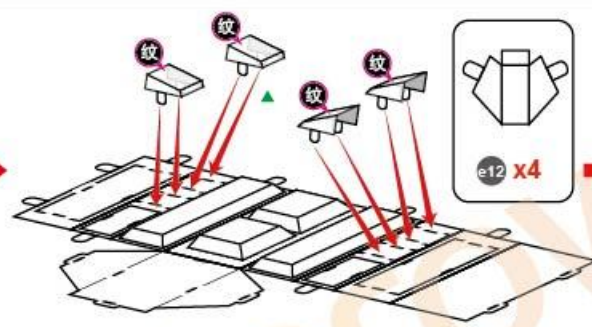
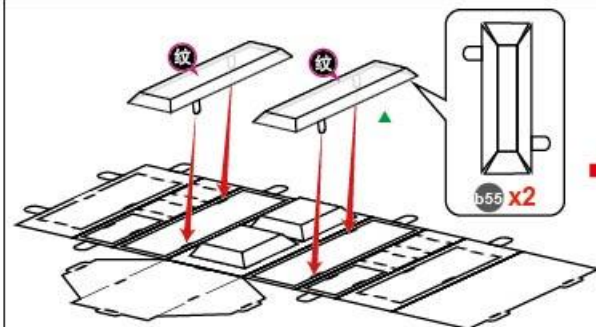
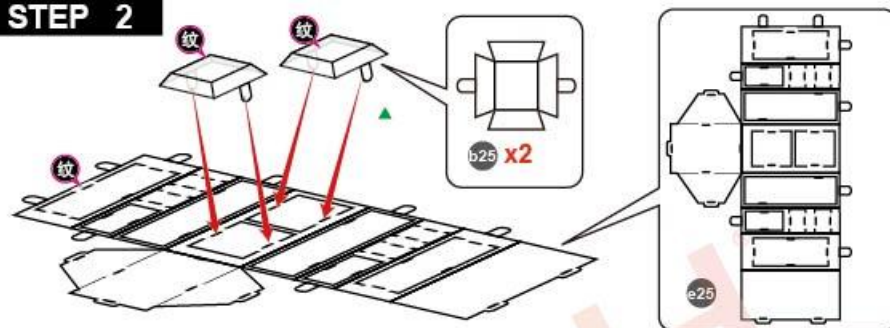
Assembly flow chart 拼装步骤

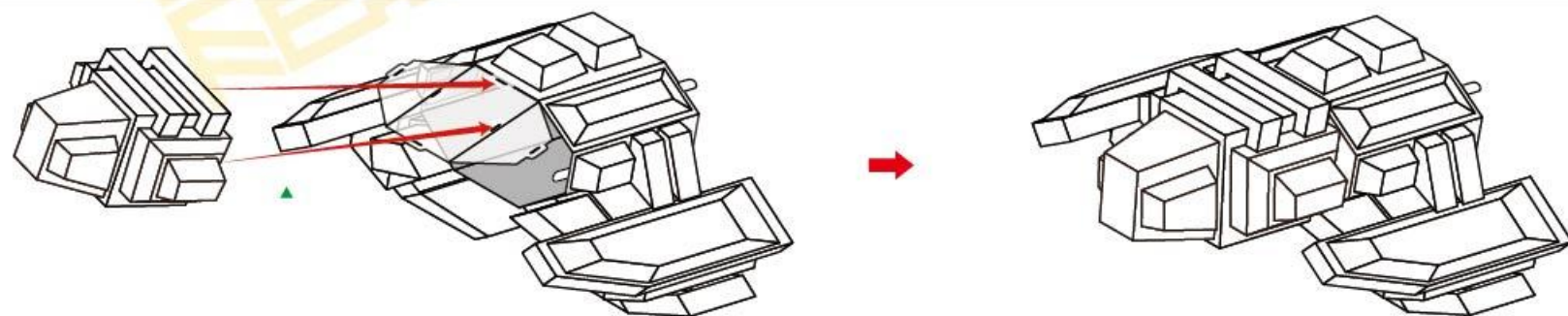
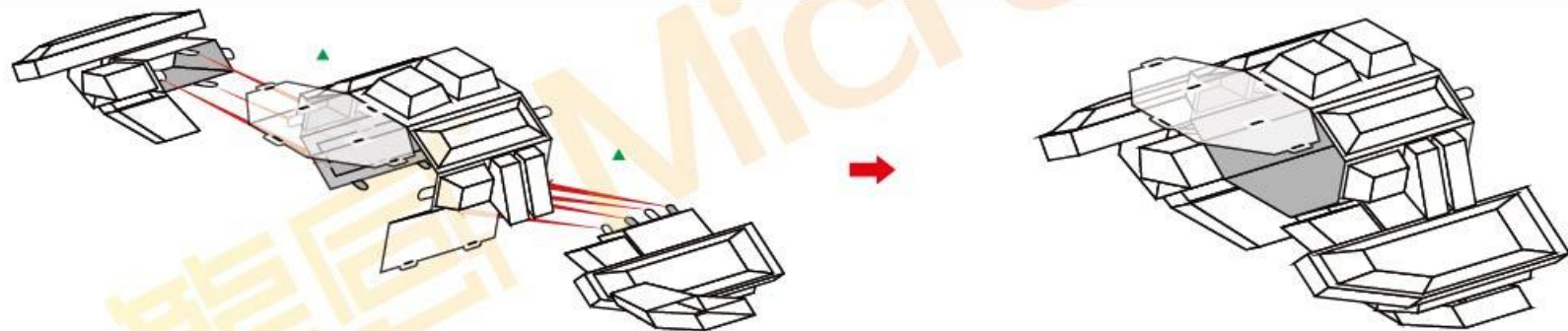
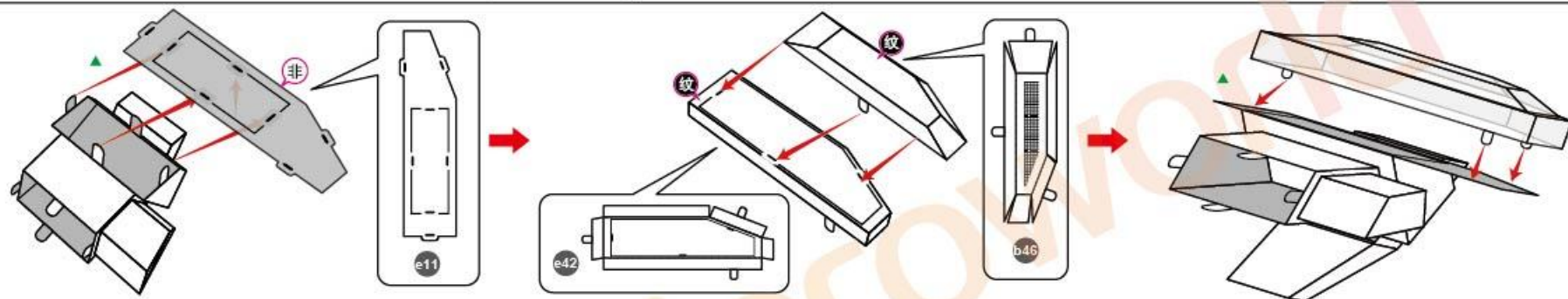
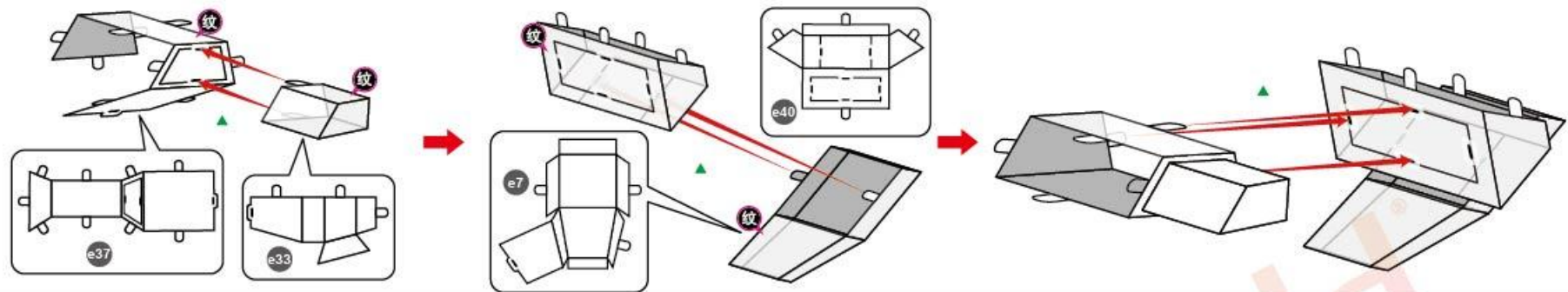
STEP 1



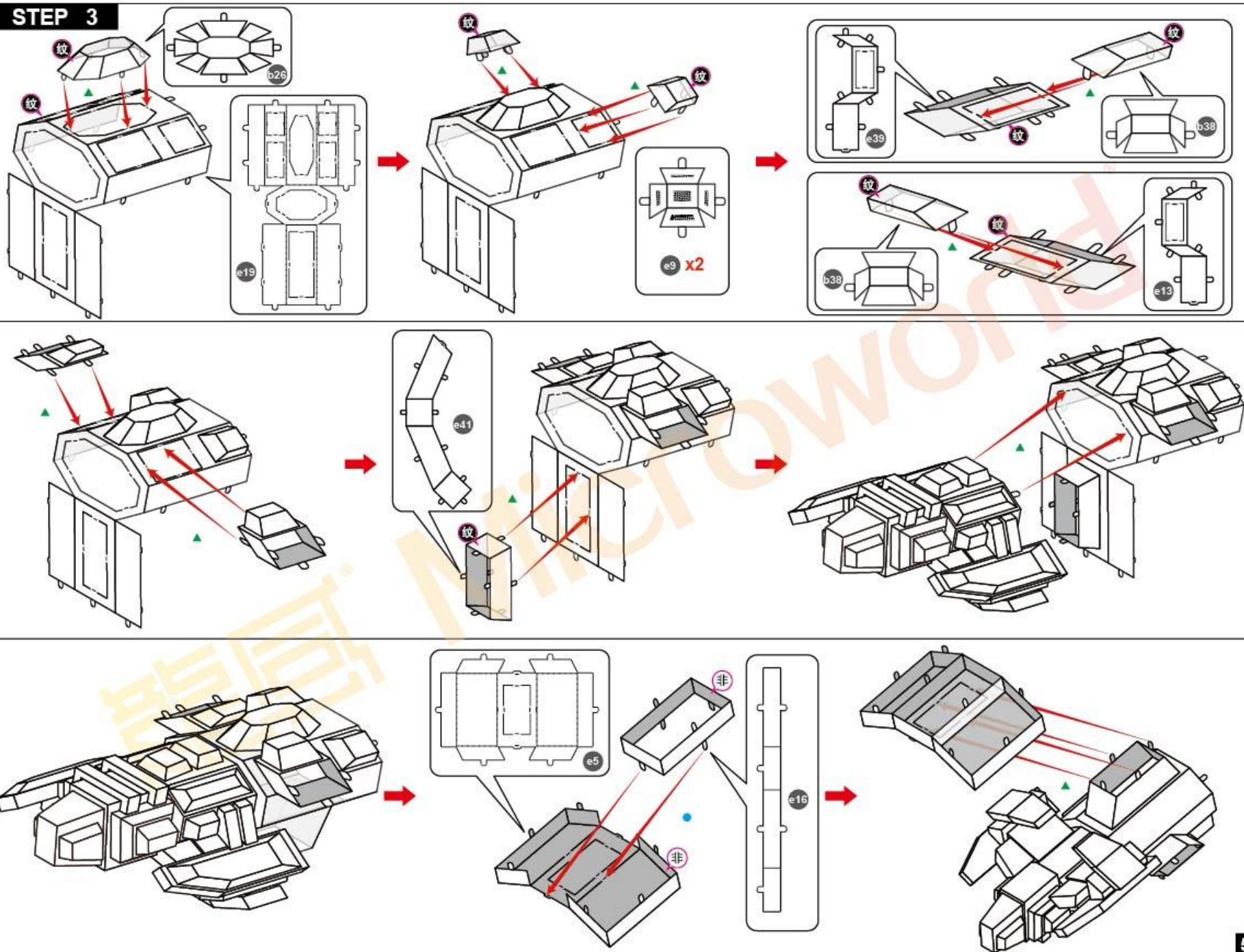


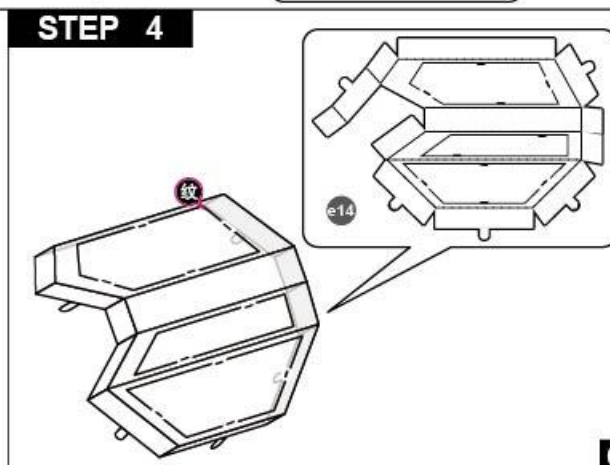
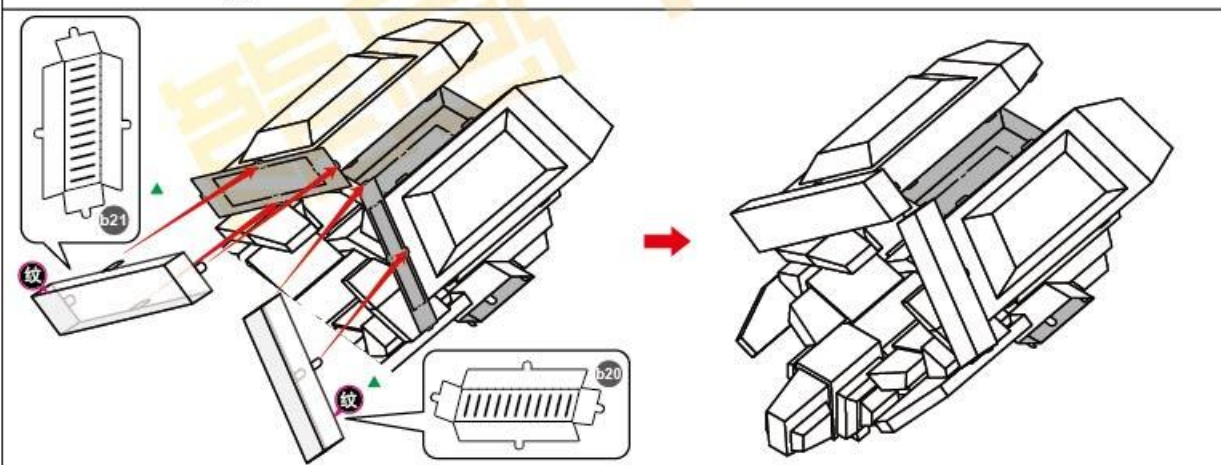
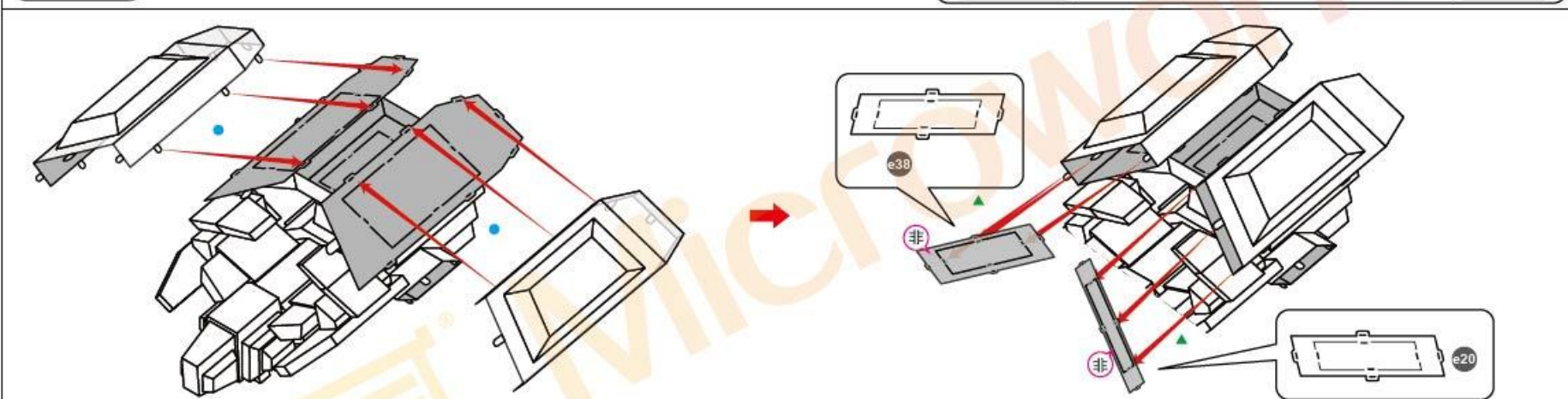
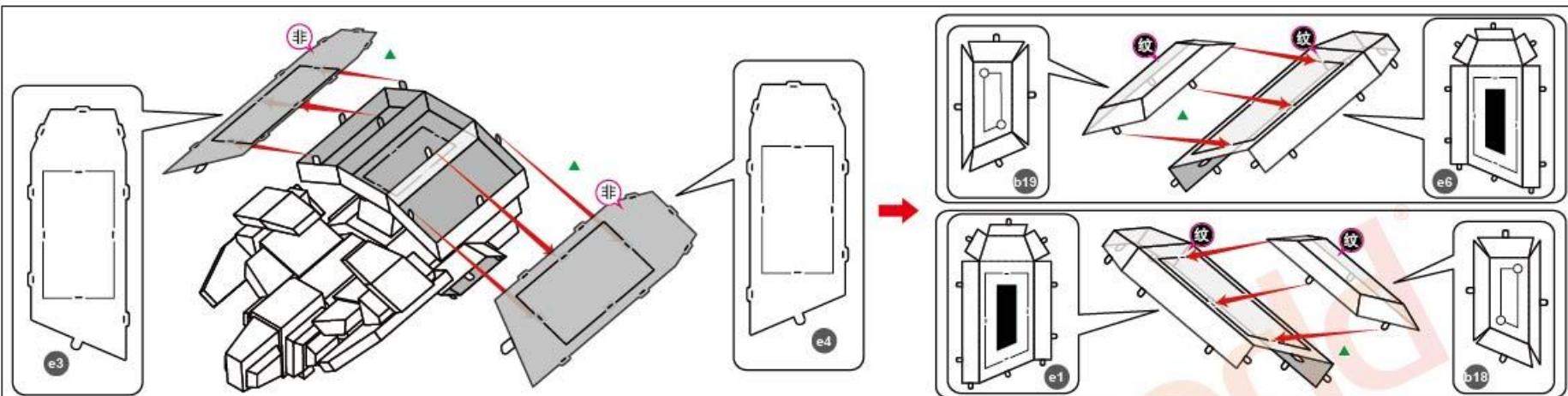
STEP 2



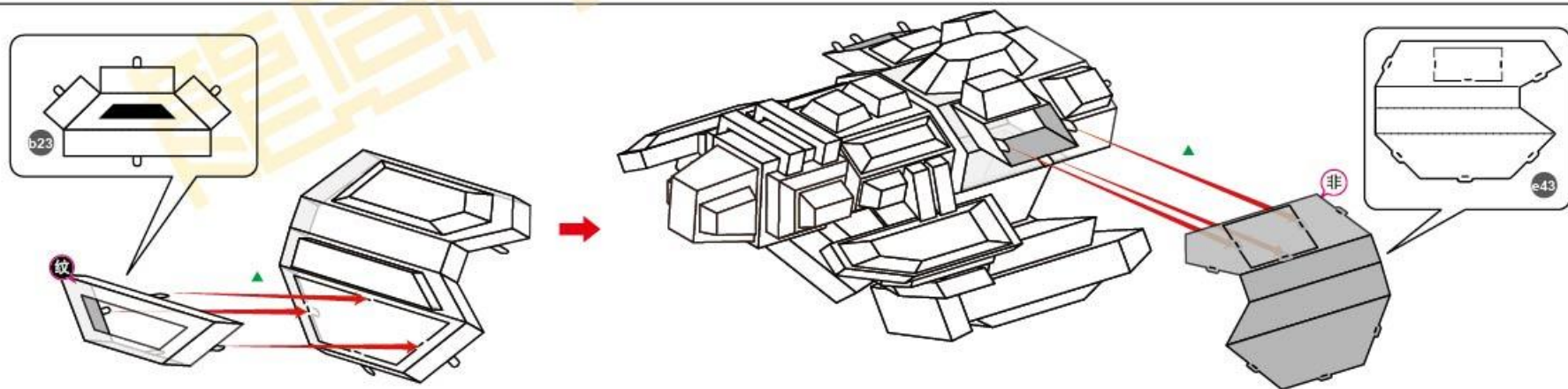
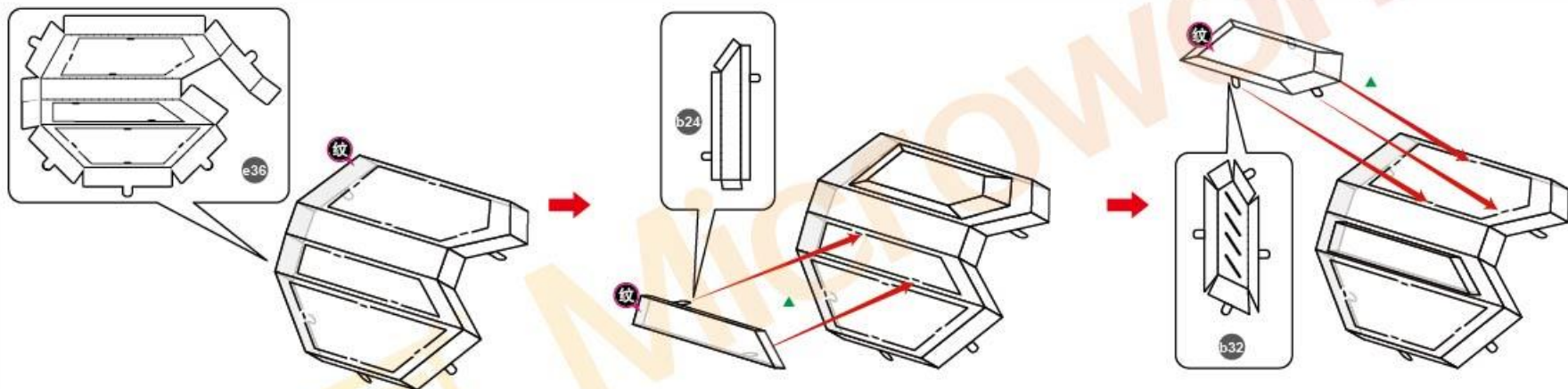
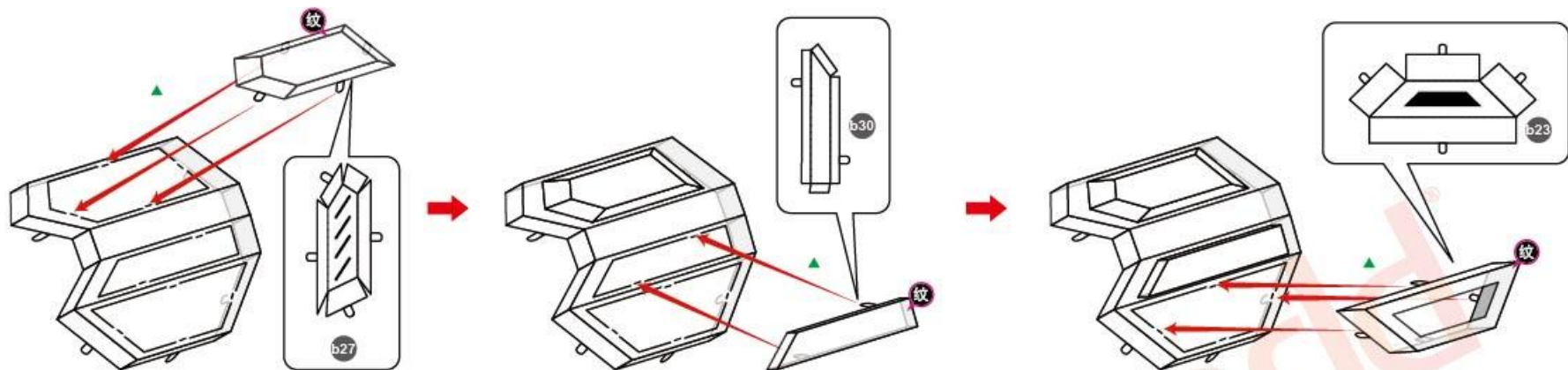


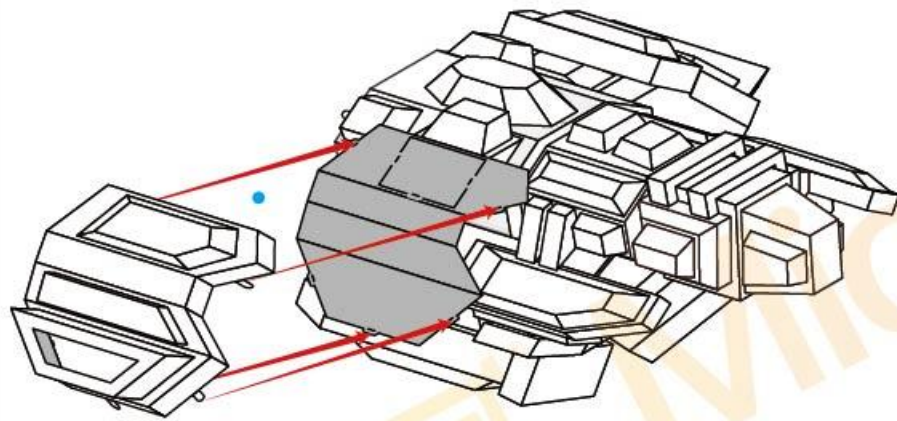
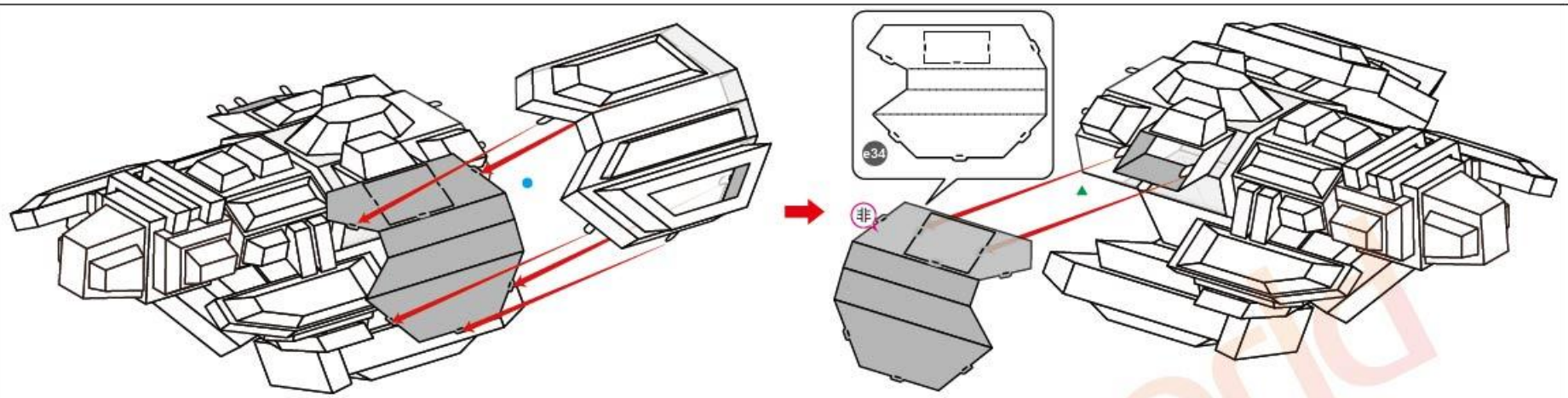
STEP 3



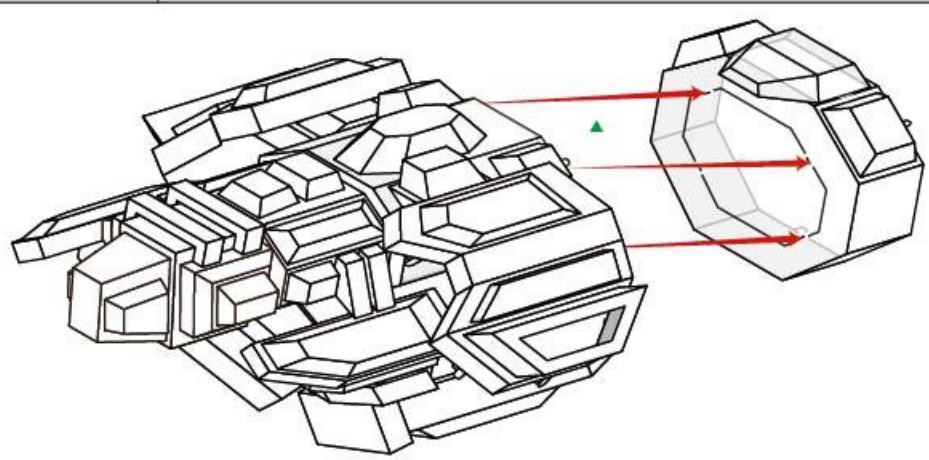
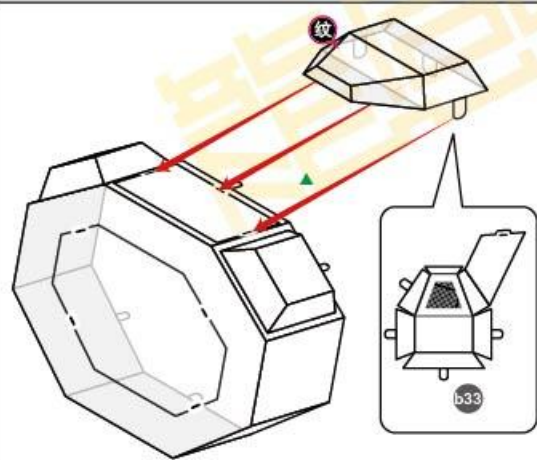
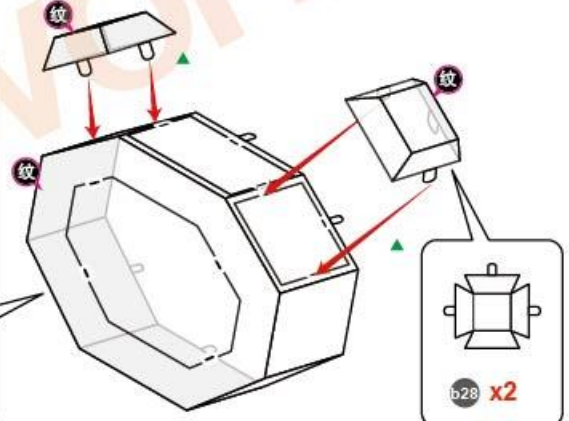
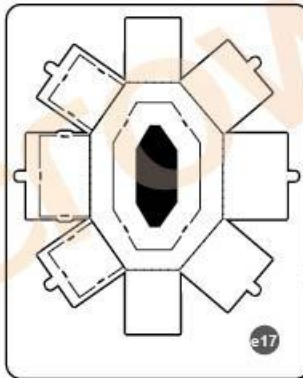


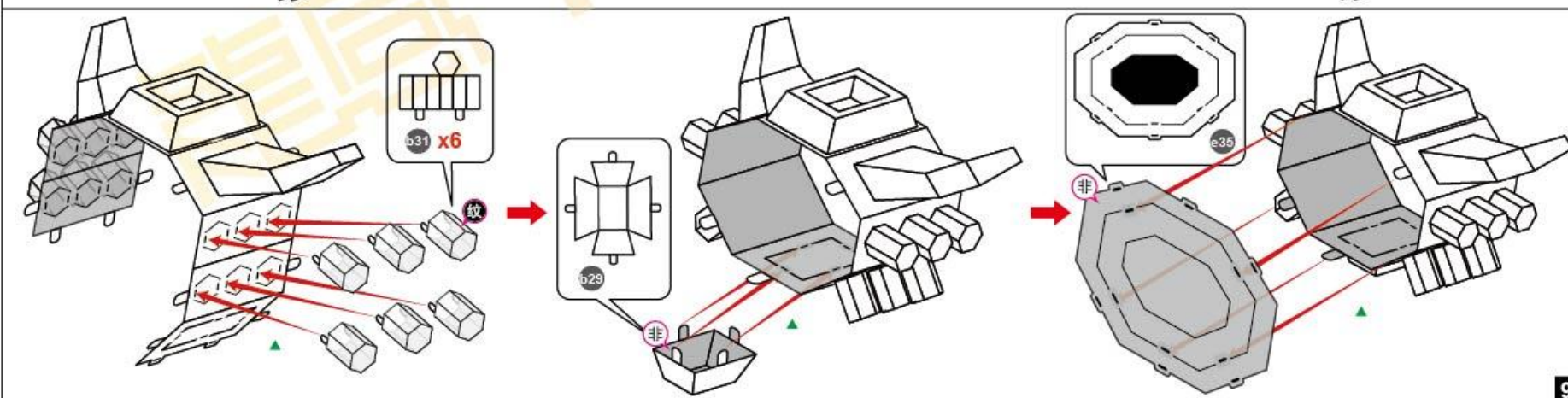
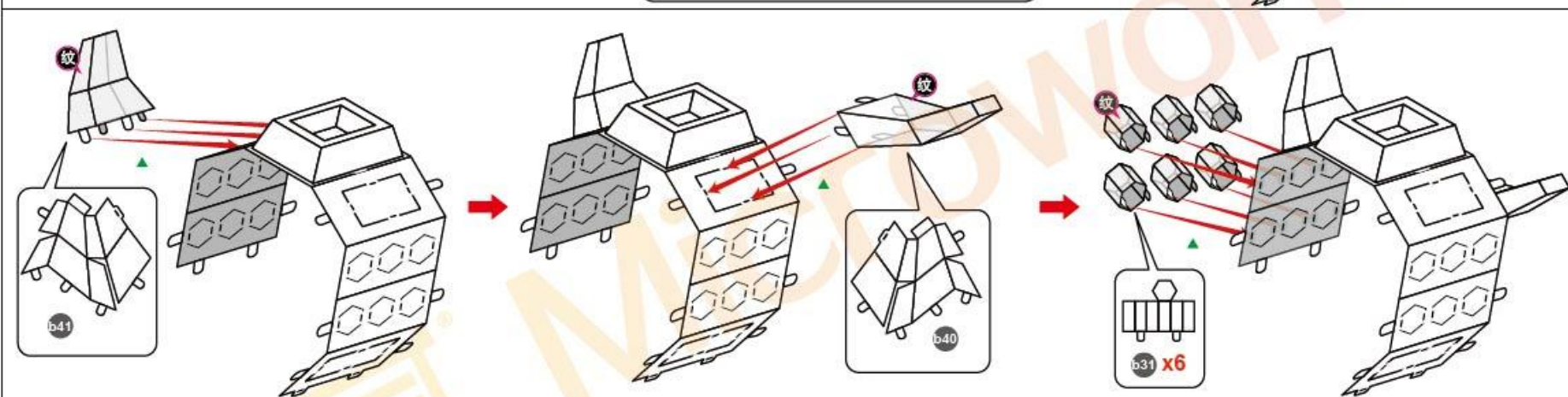
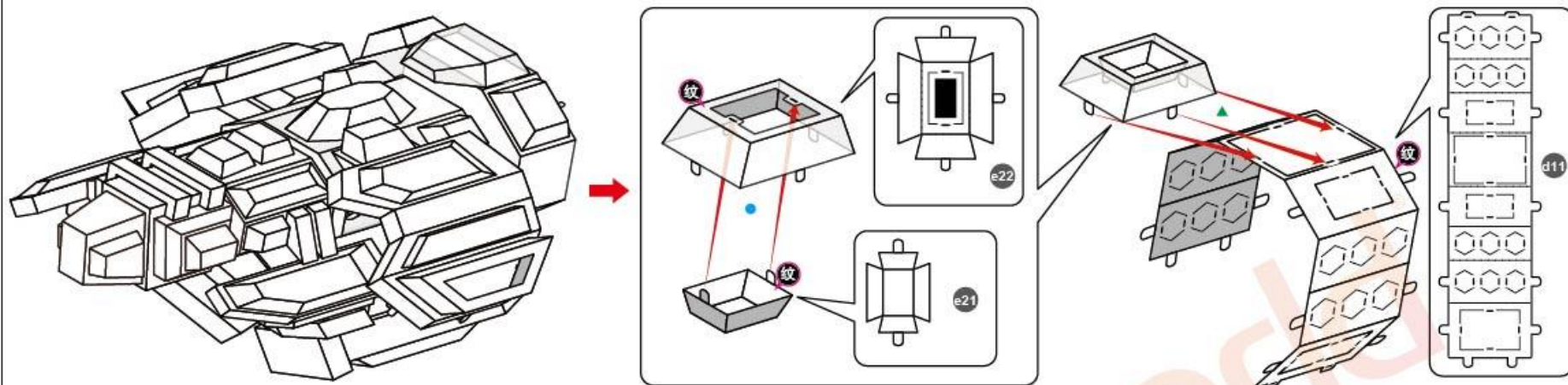
STEP 4

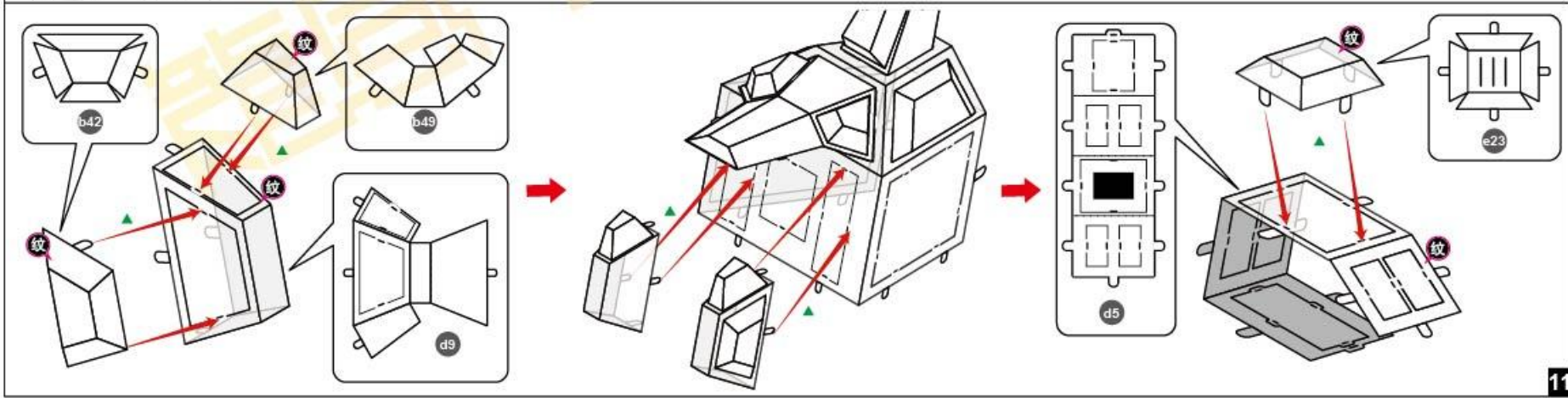
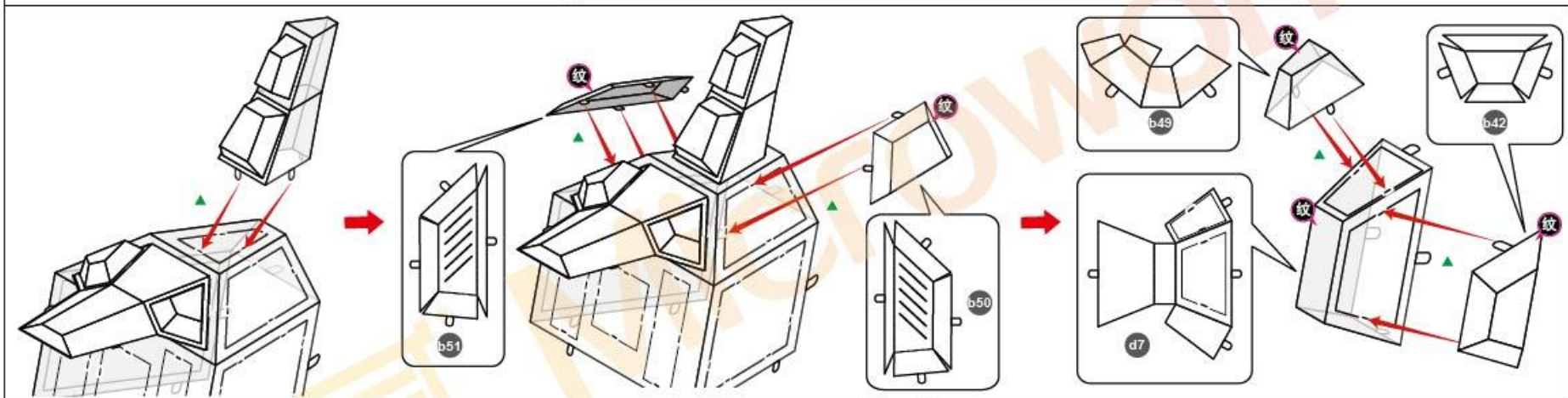
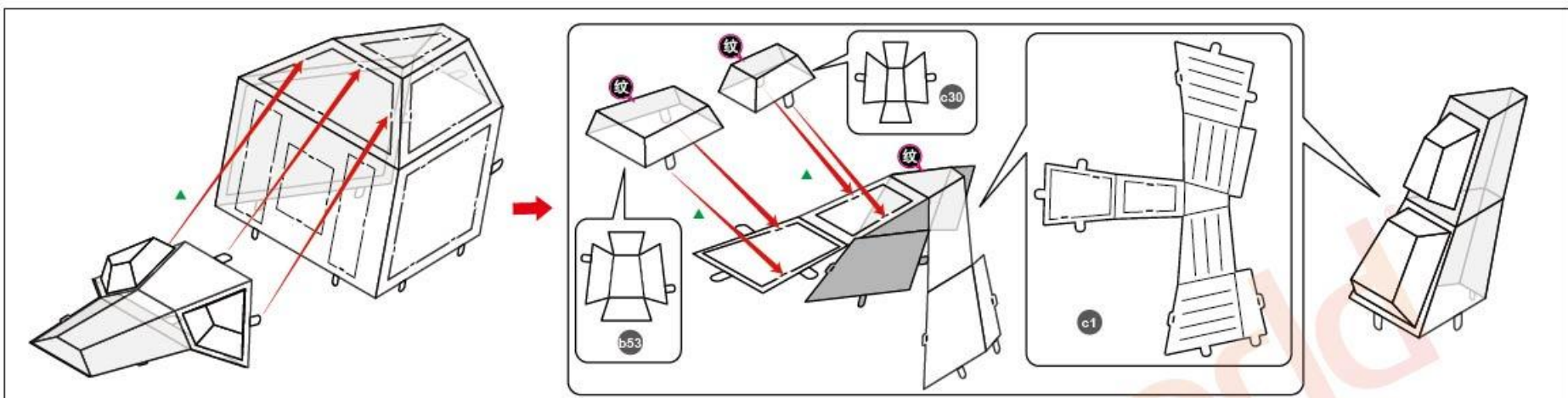


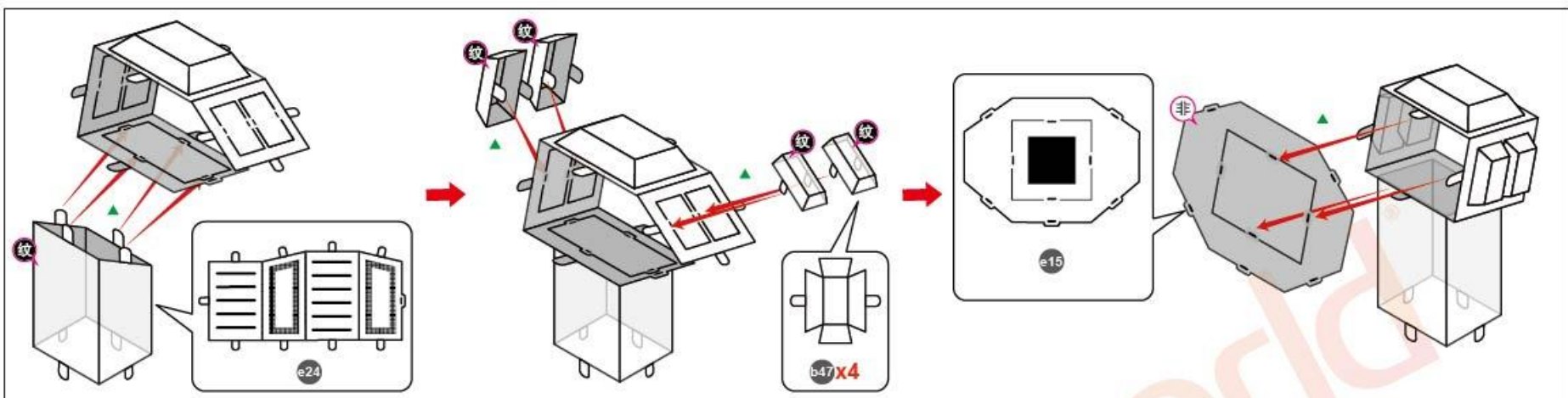


STEP 5

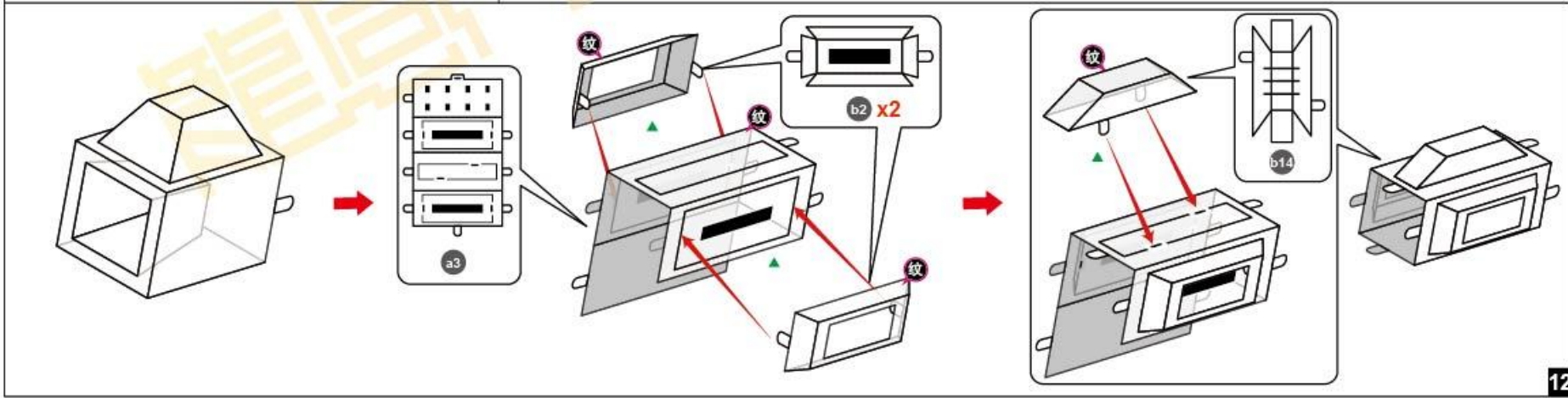
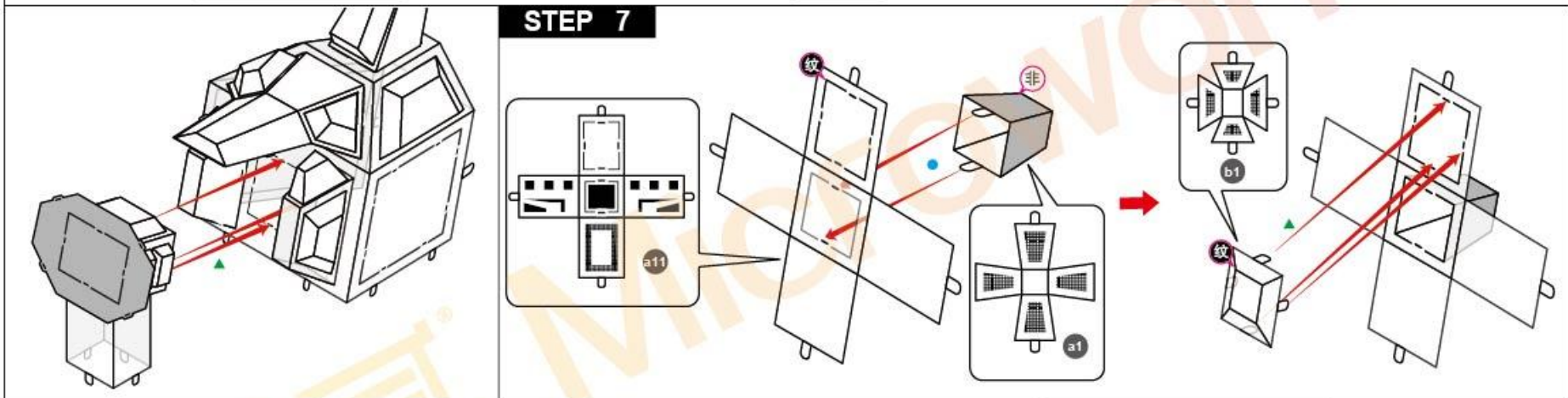




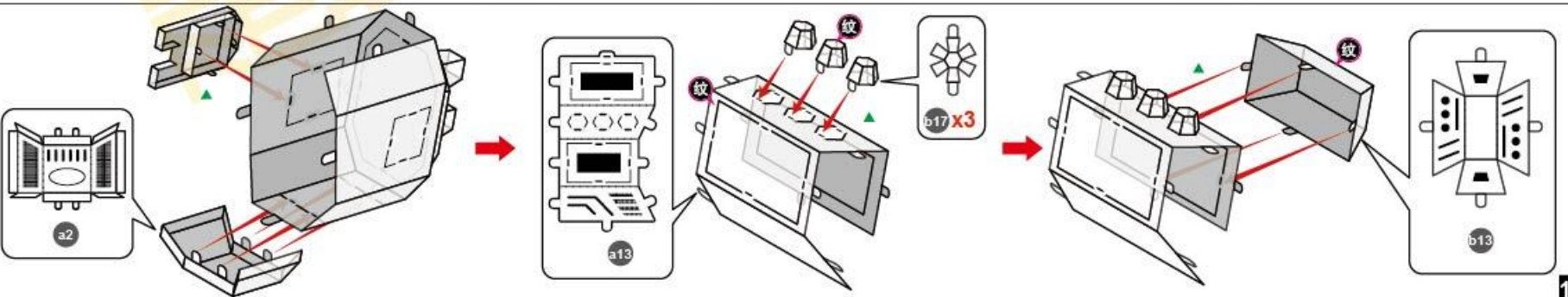
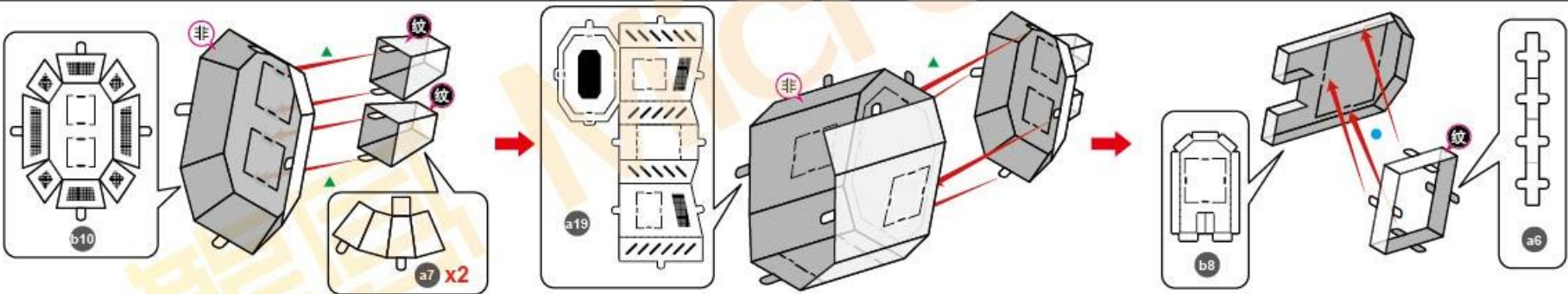
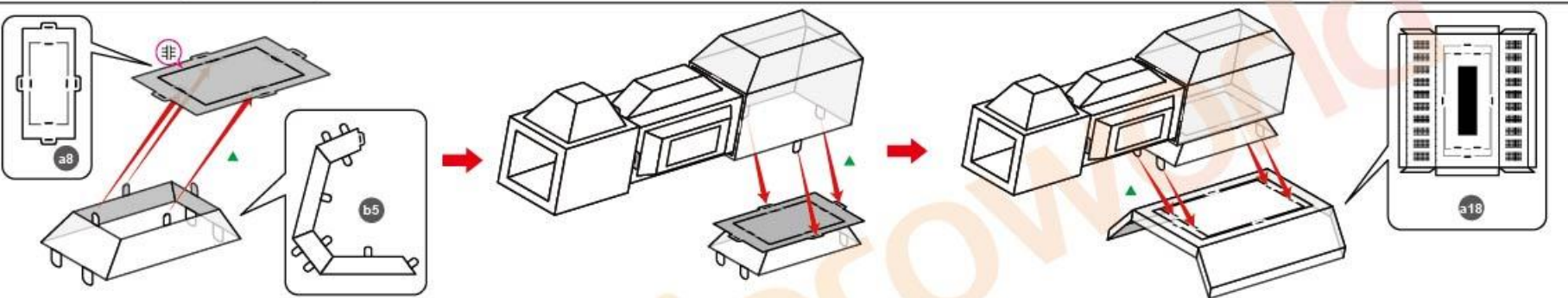
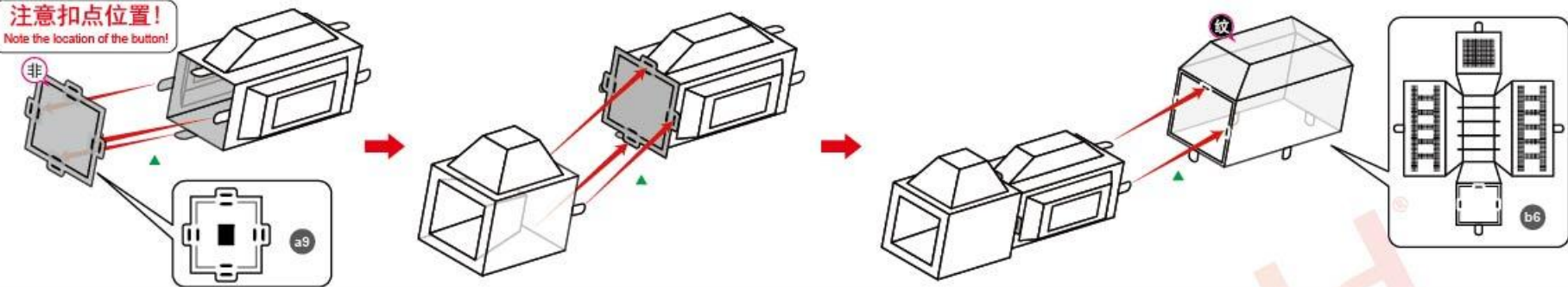


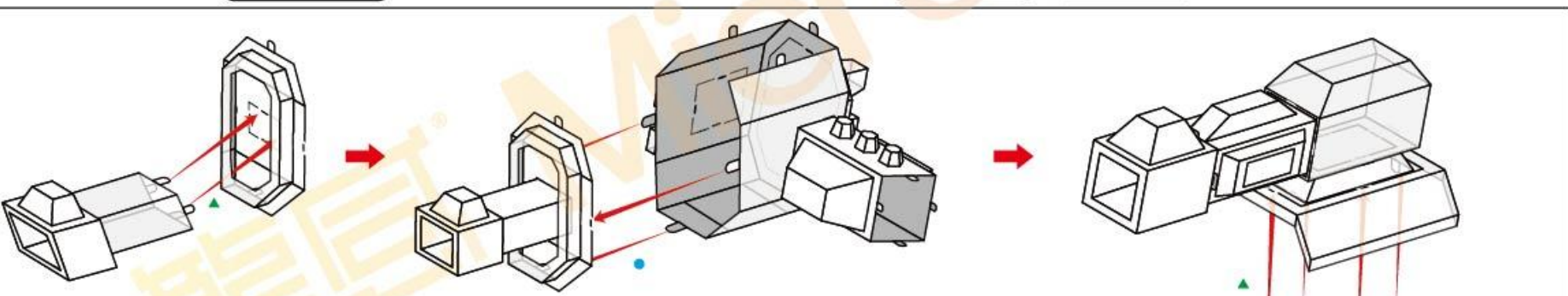
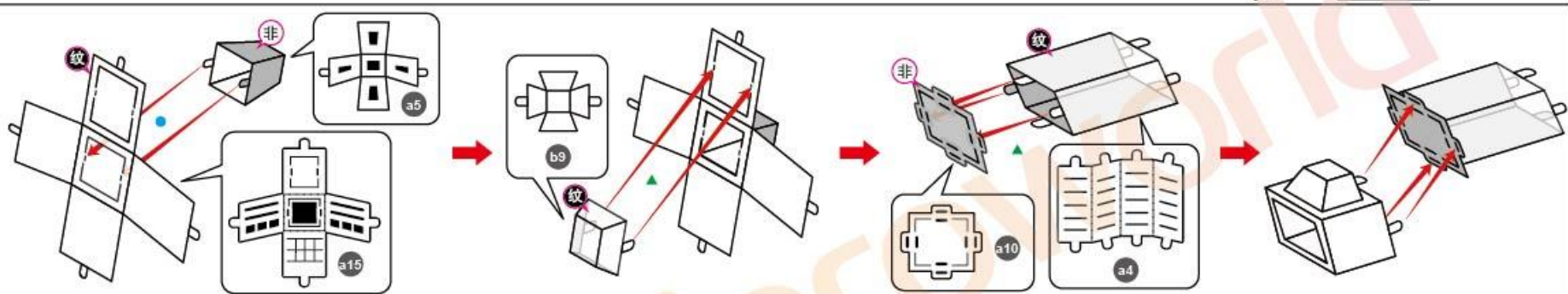
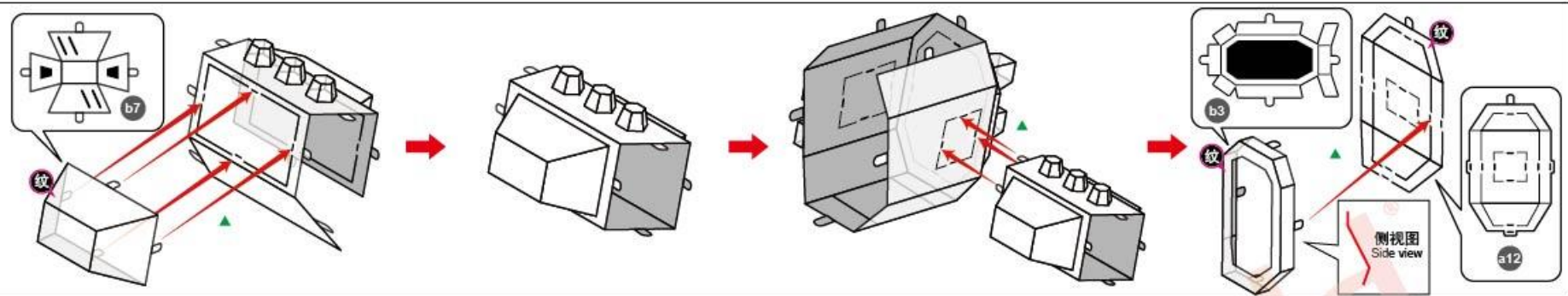


STEP 7

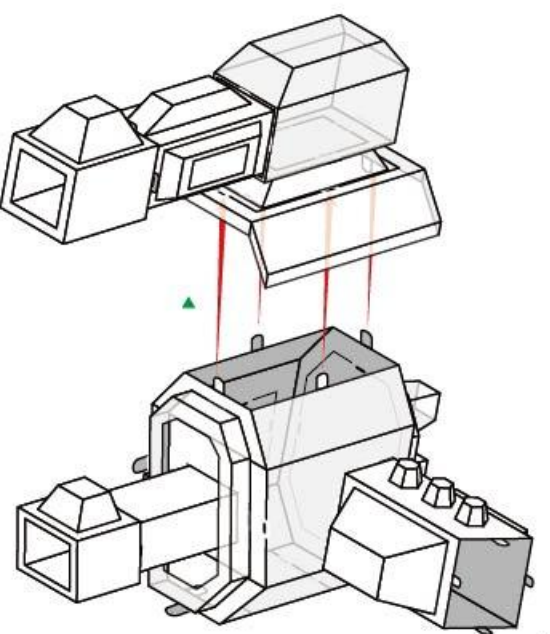
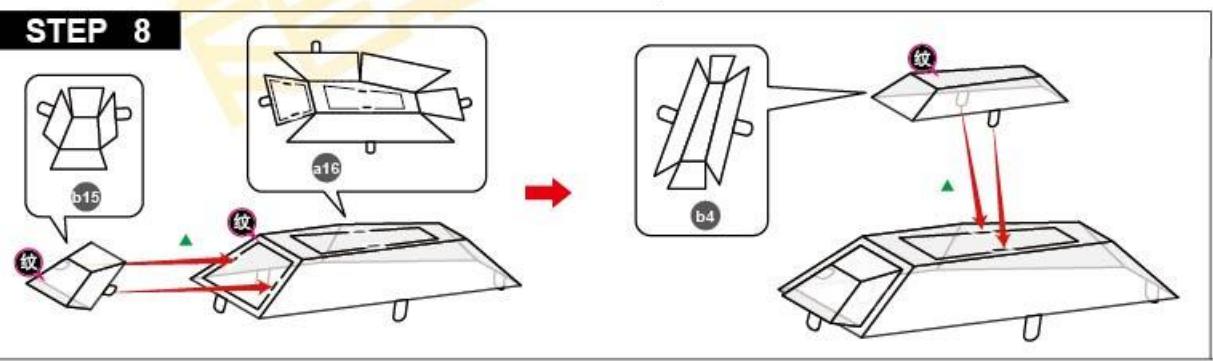


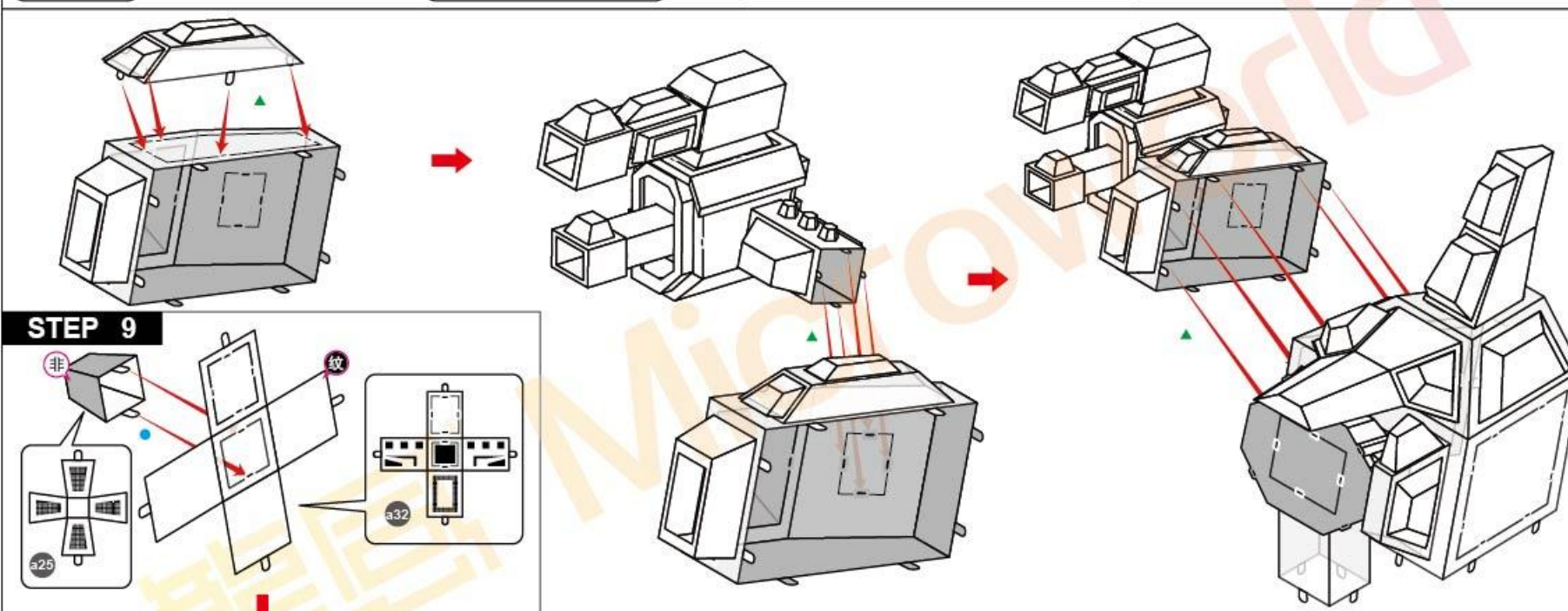
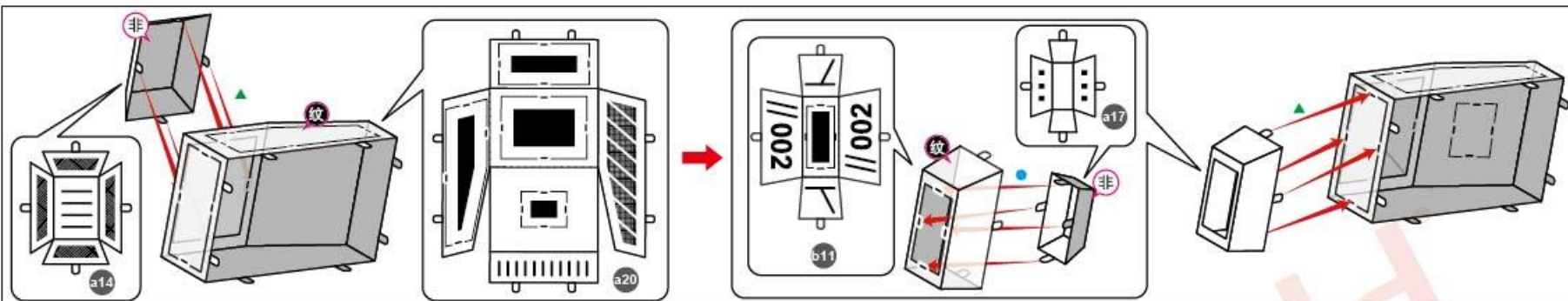
注意扣点位置！
Note the location of the button!



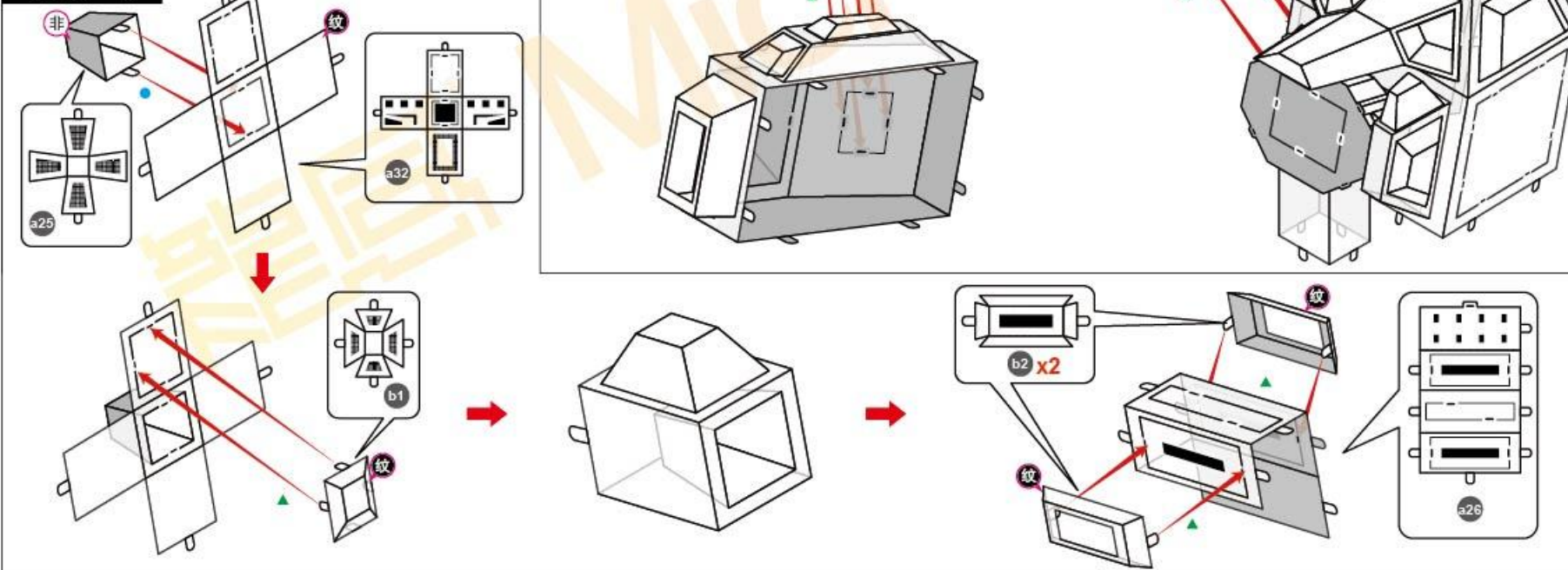


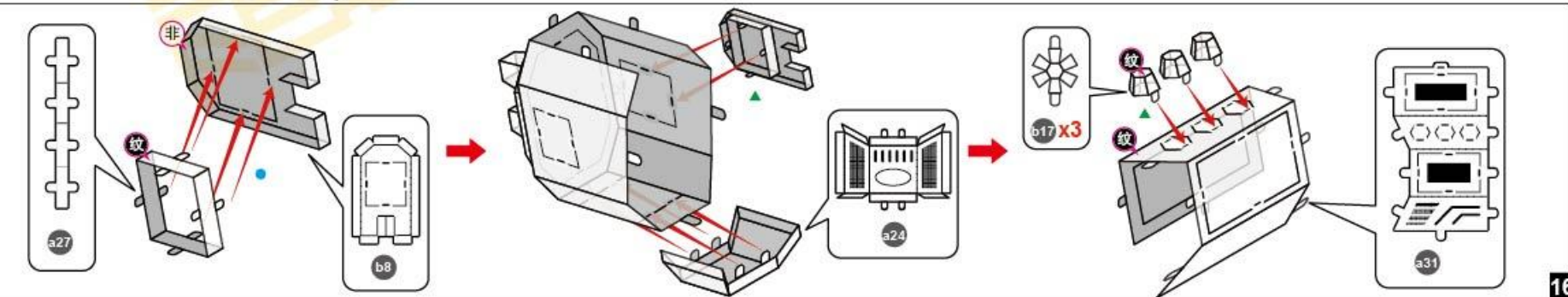
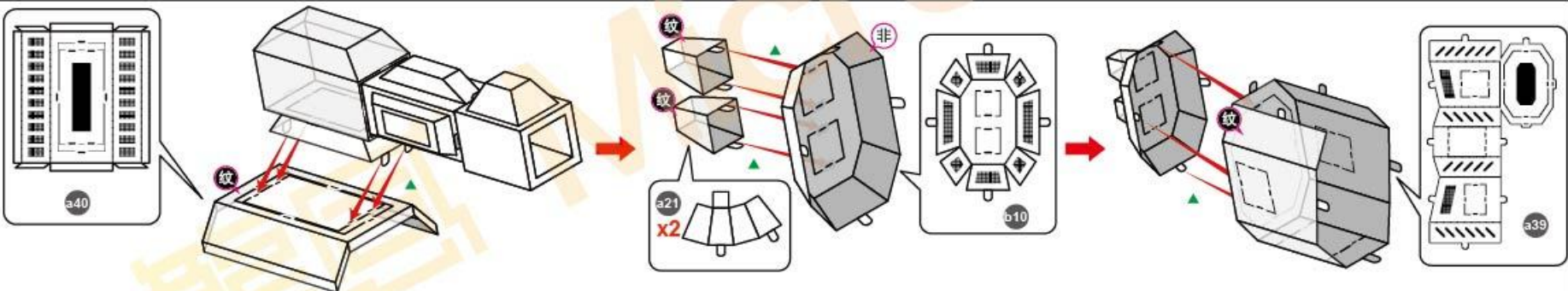
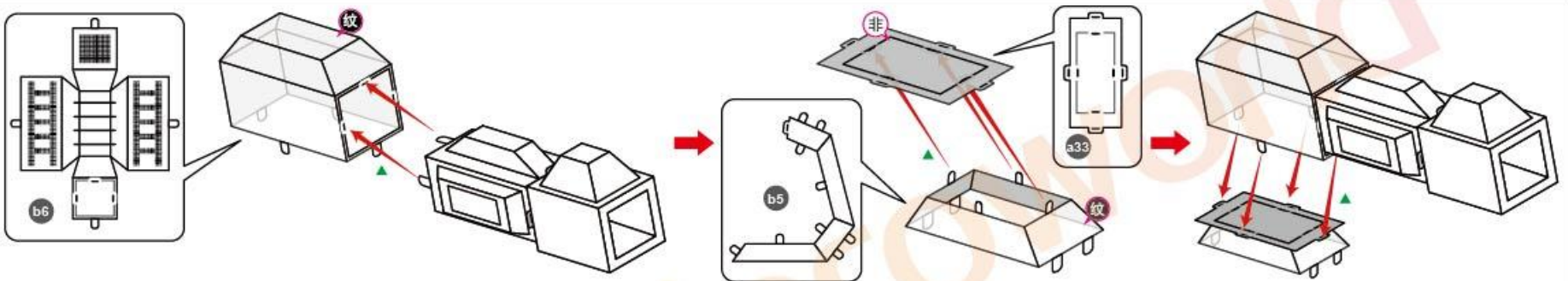
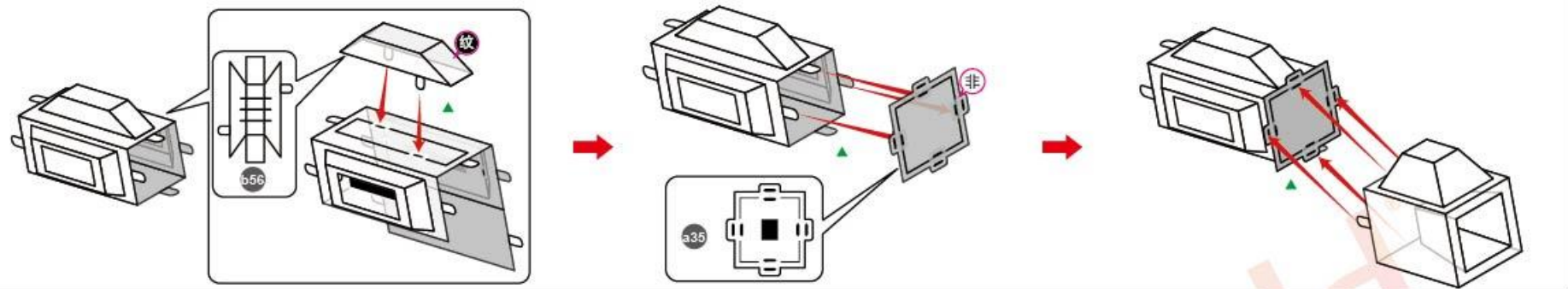
STEP 8

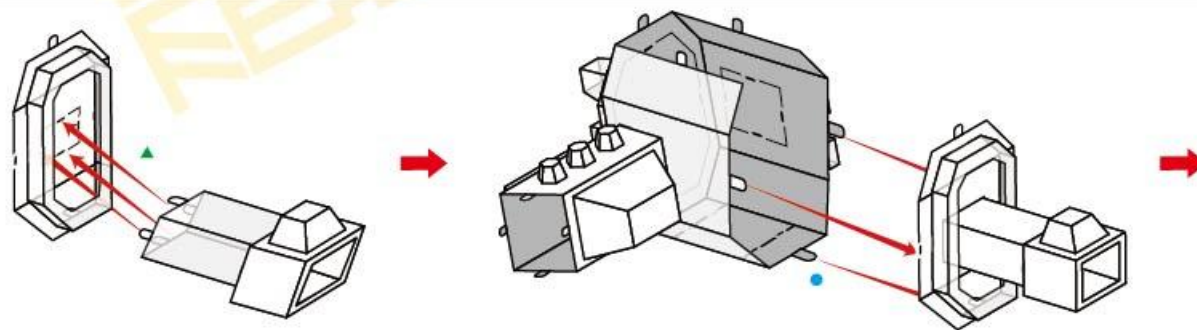
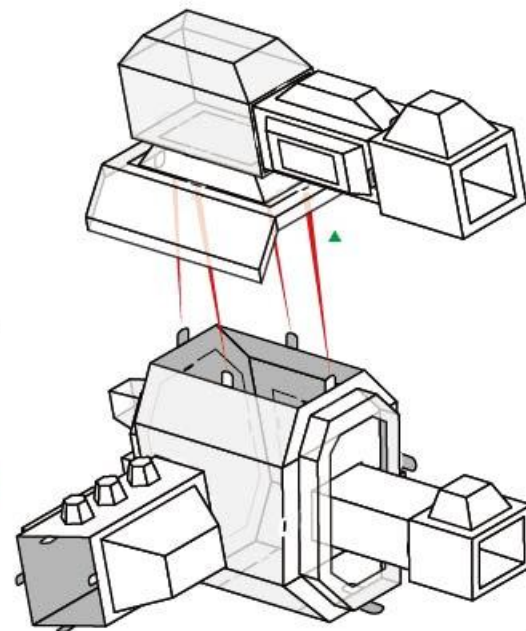
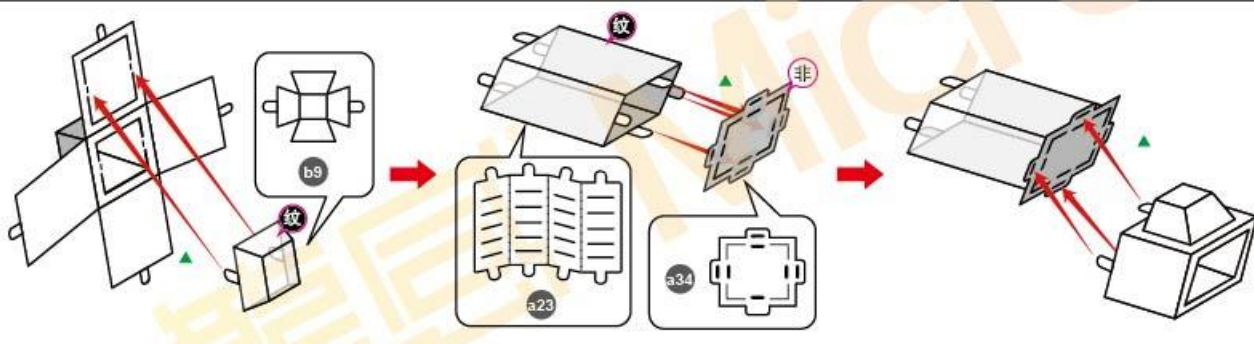
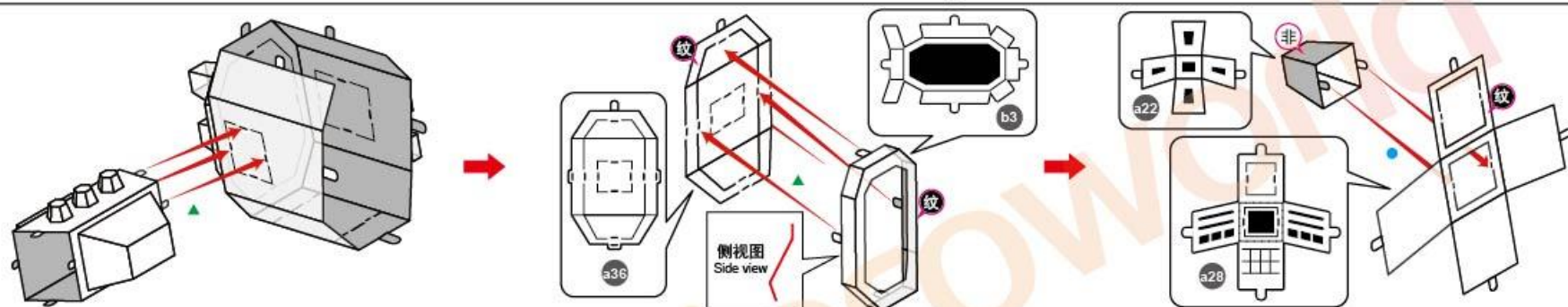
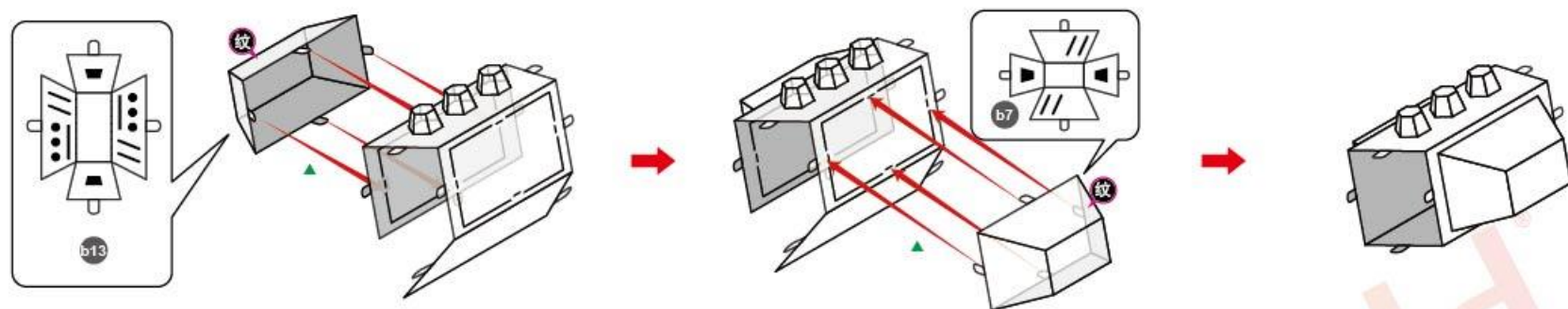




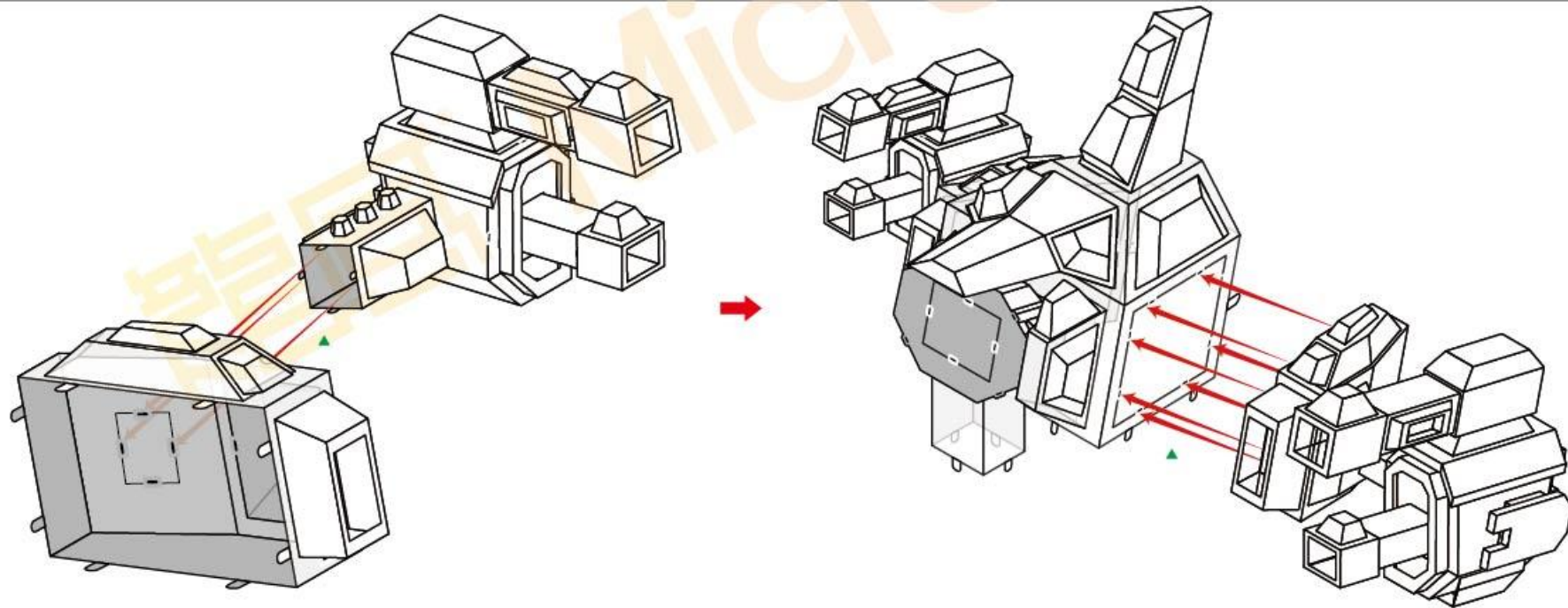
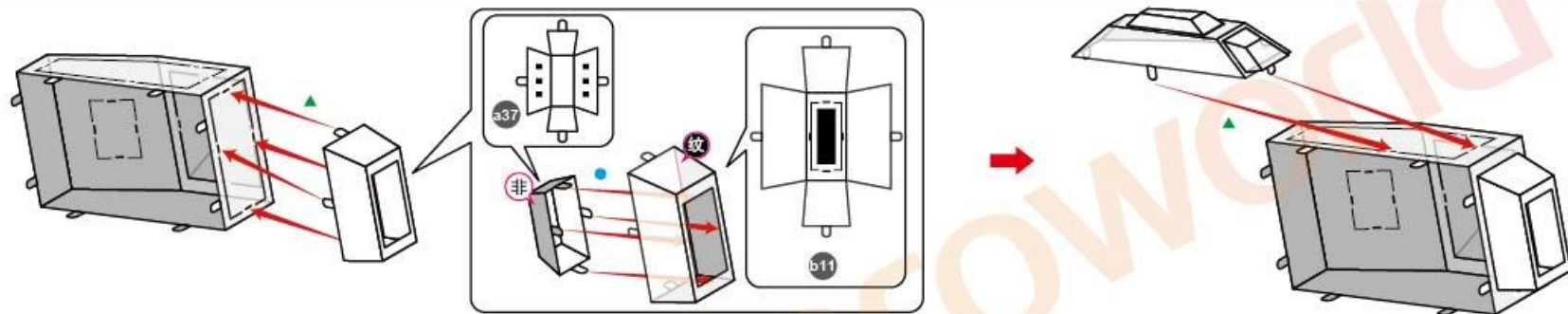
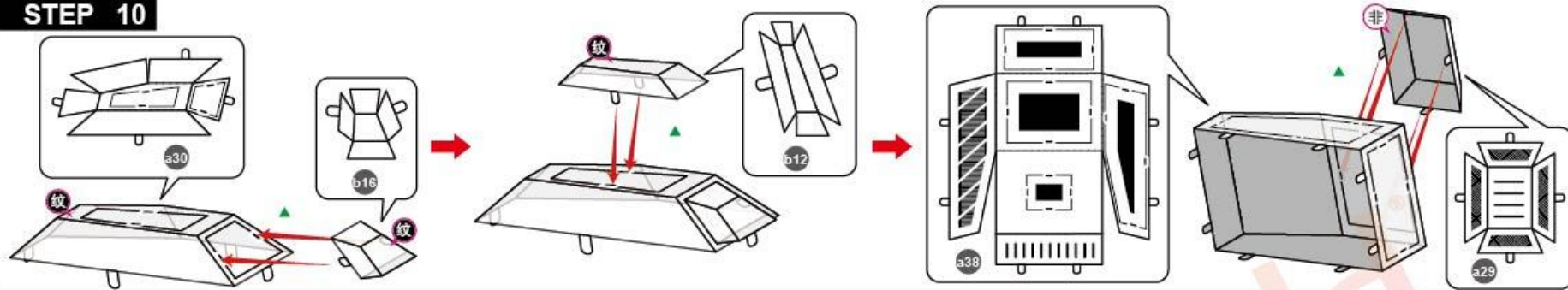
STEP 9

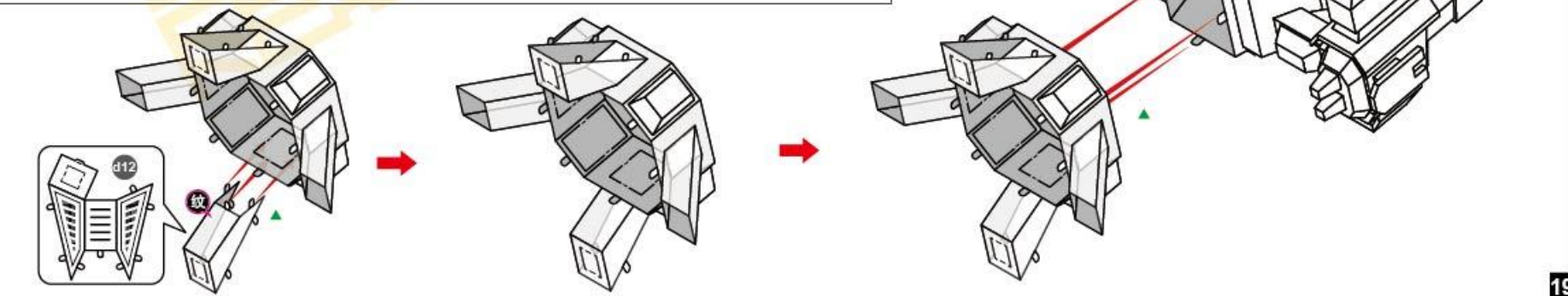
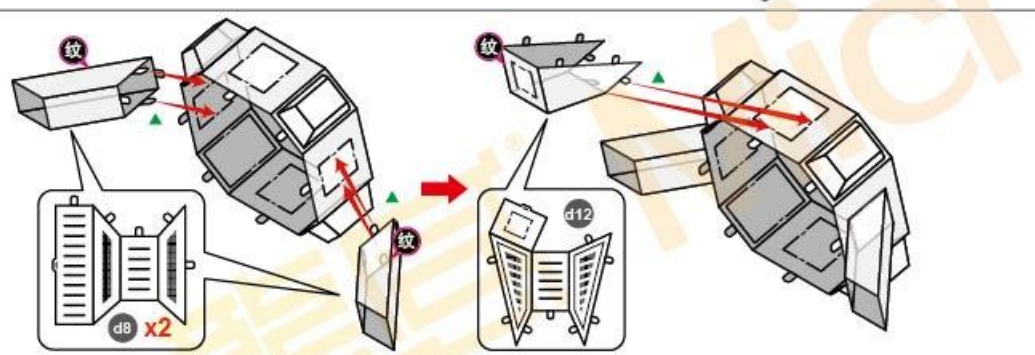
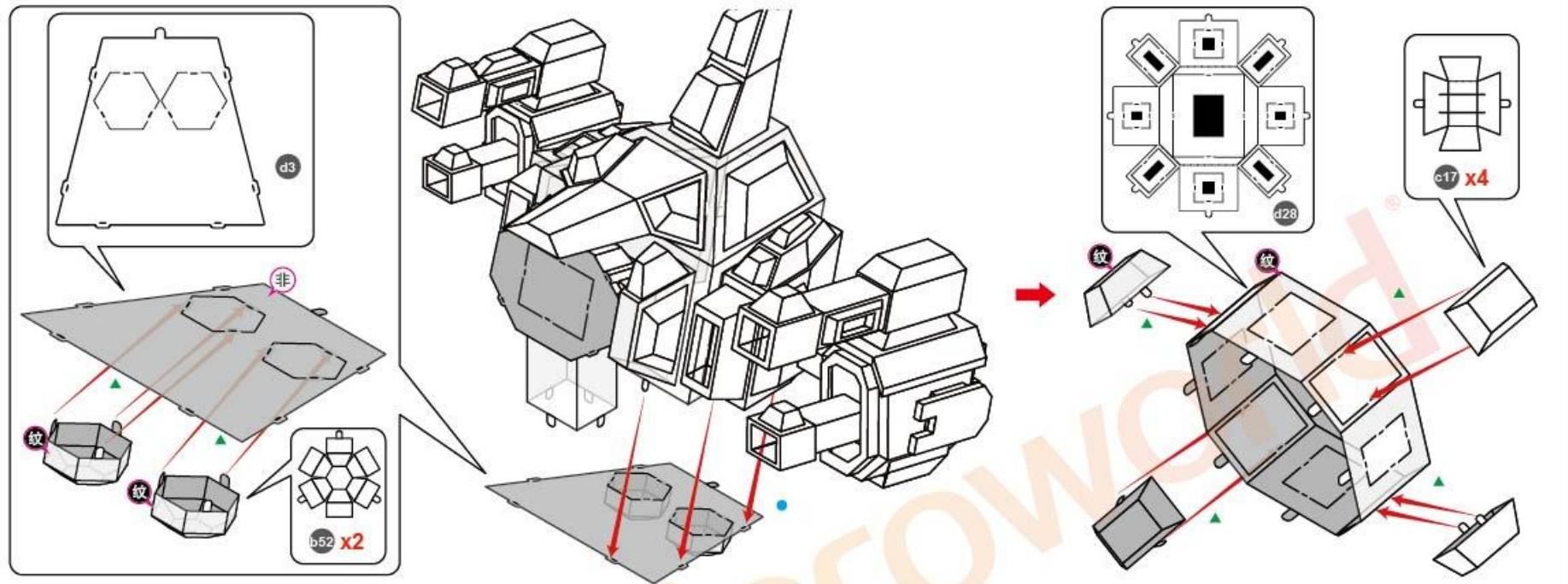


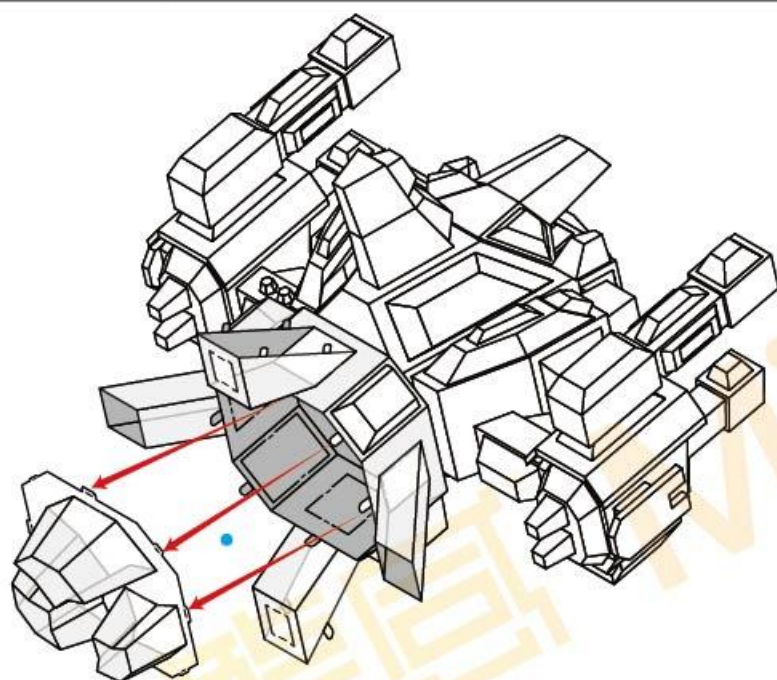
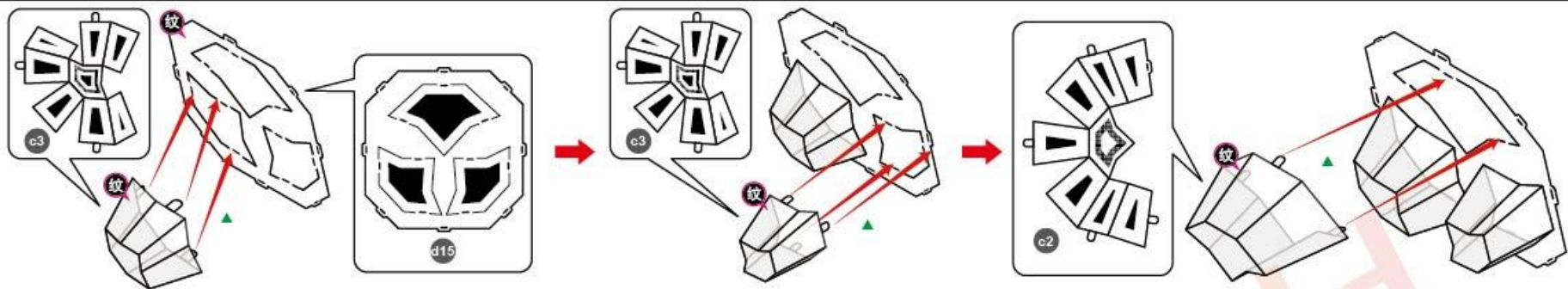




STEP 10







STEP 11

